



Stroud Region Open Space and  
Recreation Commission

**Annual Report**

**2012**

## **2012** *by the numbers:*

<b>3</b>	<i>full-time professional staff</i>
<b>15</b>	<i>goals of the new Strategic Plan</i>
<b>26</b>	<i>regional parks</i>
<b>120</b>	<i>part-time &amp; seasonal employees</i>
<b>253</b>	<i>pavilions, fields, courts &amp; pools reservations</i>
<b>258</b>	<i>rental events at Day Street Community Center</i>
<b>444</b>	<i>media releases, announcements &amp; articles</i>
<b>446</b>	<i>individual and organizational partners</i>
<b>713</b>	<i>enrolled in Stroud Kids Day Camp series</i>
<b>765</b>	<i>recreation program sessions</i>
<b>1,882</b>	<i>acres of parks and open space</i>
<b>23,182</b>	<i>program participants</i>
<b>40,000</b>	<i>copies of Stroud Region Connections</i>
<b>403,195</b>	<i>webpage hits</i>
<b>514,252</b>	<i>grant dollars secured in 2012</i>



### **Stroud Region Open Space and Recreation Commission**

**Day Street Community Center**

**15 Day Street, East Stroudsburg, PA 18301**

**570-426-1512**

**[www.srosrc.org](http://www.srosrc.org)**

# Contents



Mission & Methods	3
Letter to the Stakeholders	4
Partnerships	5
Parks, Livability & the Triple Bottom Line	10
Regional Administration	17
Greenway Projects	26
Advocacy & Community Education	32
Recreational & Cultural Programming	34
Professional Development	40
Friends of Stroud Region	42
2012 Fiscal Operations	43
2012-2015 Strategic Plan	45

*Building vibrant communities and enriching lives  
through quality open space, parks, and recreation*



# Mission

The Stroud Region Open Space and Recreation Commission provides essential public services of regional economic stimulation, environmental stewardship, and social stability through healthful recreational and cultural programming and responsible stewardship of parks and open space.

## Corporate Structure & Responsibilities

The municipalities of Stroudsburg, East Stroudsburg, and Stroud Township, Pennsylvania, along with the school districts of Stroudsburg Area and East Stroudsburg Area, created the Commission to plan, protect, and develop public recreation resources. As such, the Commission is responsible for implementing the Stroud Region Open Space and Recreation Plan, adopted in 2002.

The Commission Board consists of eight members; two from each of the municipalities and one from each school district. It employs an Executive Director, Recreation Director, Recreation Associate, and various part-time and seasonal staff; and coordinates many important contributions to the parks through its Volunteers in Parks program.

## Foundational Operating Principles

***Integrity:*** moral soundness in all business, staff, and client interactions; revealing steadfastness to truth, purpose, responsibility, and trust.

***Excellence:*** superior workmanship, highest professional conduct; exceptional quality productions in all endeavors.

***Innovation:*** nurturing personal and professional creativity; developing and introducing successful new concepts in program services design, content, and delivery.



# Letter to the Stakeholders

*Sonia C. Wolbert,  
Chairperson*

## **Dear Friends and Supporters,**

What a difference a year makes! In 2012 we began wonderful projects that we received record funding for. In the coming years we will see the fruits of our labor. It is an exciting time! We revamped our strategic plan and now have a road map for the future. They say good things take time and it is true, but it is always worth the investment.

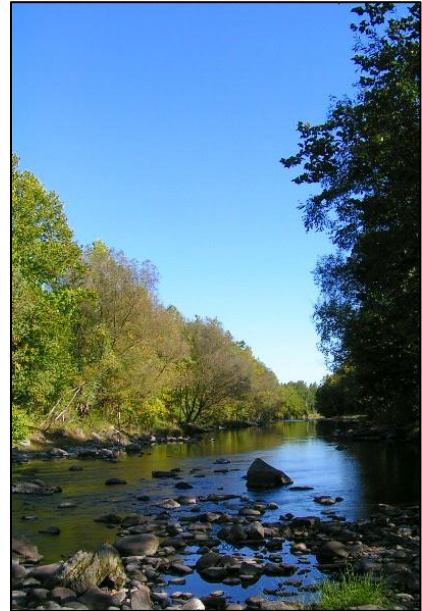
What do we hope to accomplish in the coming year? Very simply—make our community a better place to live. Through our programs, partnerships and projects we are connecting people every day and making an impact.

In 2012 we re-dedicated ourselves to our original project: The Stroud Greenway. What is a Greenway you ask? It's a series of connecting trails along the Brodhead, McMichael and Pocono Creek that will link to sidewalk trails throughout our downtowns. What will a Greenway do for our community? It will connect us to our community, it will connect us to Nature, it will give us a safe place to walk, run, bike and enjoy the outdoors. These are the obvious benefits but the Greenway will also bring dollars to our communities. It will help our local business. It will stimulate our local economy. There are so many communities throughout the country who have already reaped the rewards of having a Greenway in their community we look forward to the same benefits in our community.

This year we will celebrate our Ten Year Anniversary. There is so much to celebrate. We began as a small organization with one staff member without a place to call home. We have grown into a much larger Staff operating out of a Community Center that serves many purposes and many organizations and offers so many great programs to the Community with countless partners and volunteers who make it all possible.

A huge THANK YOU to all those who have made it all possible! Our dedicated Board and Committee members who volunteer their time to make a difference. Our Program Partners who help us offer great programs. Our Volunteers without whom we could not do half of what we do. The local businesses that support us through their generosity.

Finally, consider this a personal invitation to join us and be part of this exciting time and help make our community a better place. Your time and talents are needed!



# Partnerships

*The success and impact of the Regional Commission is derived from its many community collaborations between municipalities, elected and appointed councils, boards and committees, civic and governmental organizations, businesses, schools, institutions, and individuals. Such public and private partnerships continue to help build a vibrant, healthy community in many tangible ways. In 2012, we have greatly benefited from the following 446 community-minded organizations and individuals.*

## Municipal Members

Borough of East Stroudsburg	PO Box 303, East Stroudsburg, PA 18301	570-421-8300
Borough of Stroudsburg	700 Sarah Street, Stroudsburg, PA 18360	570-421-5444
East Stroudsburg Area School District	PO Box 298, East Stroudsburg, PA 18301	570-424-8500
Stroudsburg Area School District	123 Linden Street, Stroudsburg, PA 18360	570-421-1990
Township of Stroud	1211 North Fifth Street, Stroudsburg, PA 18360	570-421-3362

## Commissioners

		<i>term expires</i>
Charles Baughman, <i>Vice-Chair</i>	Stroudsburg Borough	2014
John Burrus	East Stroudsburg Area School District	2012
Ray Moeller	Stroud Township	Alternate
James Phillips, <i>Treasurer</i>	East Stroudsburg Borough	2014
Theo Quinones	Stroudsburg Area School District	Alternate
Jeff Walters	Stroudsburg Area School District	2012
Susan Welsh	Stroudsburg Borough	Alternate
Linda Wiles	Stroud Township	2013
Sonia Wolbert, <i>Chair</i>	East Stroudsburg Borough	2013
Liz Wright	Stroud Township	2014
Cecilia Yost, <i>Secretary</i>	Stroudsburg Borough	2013

## Solicitor

Todd W. Weitzmann, Weitzmann and Weitzmann, LLC

## Recording Secretary

Wanda Lasher

## Auditor

Todd Bushta, CPA, Gneiding, DeSanctis, Blizard & Company, LLP

## Staff

Tim Herd, Executive Director	Gary Bloss, Greenway Coordinator
Niki Tourscher, Recreation Dir.; <i>Jan-July</i>	Beth Dwyer, Recreation Dir.; <i>Aug-Dec</i>
Jessica O'Keefe, Recreation Assoc.; <i>Jan-Feb</i>	Josh Leap, Recreation Assoc.; <i>May-Dec</i>
Shelly Sharp, Mihaela Nicolescu, Office Assist.	Gage Bongiovi, Intern

## Greenway Advisory Board

Frank Allen  
Lori Foglio  
Ray Moeller

Gary Bloss, *Ex-officio*  
Jeff Heberley  
Mark Sowers

Jim Dellavalle  
Samantha Holbert  
Linda Wiles

Christine Dettore  
Don Miller

## Recreation Advisory Board

Ed Cramer  
Paula Gordon

Wanda Lasher  
Ruth Piancone

Gretchen Rusk  
Barbara Scanlan

Niki Tourscher

## Friends of Stroud Region Open Space Board

Mary Ellen Cramer  
Richard Cramer  
Tim Herd, *Ex-officio*

Darlene Farris-Labar  
Mark McDonald  
Jim Olizarowicz

Liane Scofield  
Sue Welsh  
Sonia Wolbert, *Chair*

## Stroudsburg Parks and Recreation Board

Matt Abell  
Mark McDonald

Barbara Quarentello  
Gretchen Rusk

Barb Scanlan  
Eric Scelza

Sue Welsh  
Cecilia Yost

## Stroud Township Parks and Recreation Board

Glenn Bisbing, Jr.  
Ed Cramer  
Mary De Quevedo

Paula Gordon  
Sharon Grover  
Ann Horvath

Cameron McKenzie  
Ruth Piancone  
Mark Sowers

## East Stroudsburg University Practicum Students

Gage Bongiovi

Gwendolyn Vilade

Zach Rotz

John Deppert

## Stroudsburg Pool & Concession Staff

Lacey Anger  
Ciara Banks  
Michelle Barsi  
Emily Clark  
Melissa Doboroski  
Kathleen Doherty  
Alexandra Dunigan

Elias Frantz  
Jaimie Juschitsch  
Chelsea Juschitsch  
James Lynch  
Delia Lynch  
Emily Joyce  
Riley Kimball

Meghan O'Malley  
Bridget O'Malley  
Joni Pansy  
Ben Gerner  
Leanne Rios  
Ramon Rios  
Angelique Riutort

Caroline Swanson  
Alex Trezza  
Anthony Trezza  
Corey Warner  
Steve Wootton  
Catherine Zini

## Dansbury Concession Staff

Vanessa Bailles  
Marlisa Doleidon

Devyn Kolcun  
Ann Marie Lynn

Amber Stone-Cameron  
Dawn Treible

## Seasonal Program Staff and Aides

Alexis Angulo	Jessica Geisel	Ryane Marocchi	David Ruck
Katie Battle	Melissa Geisel	Kelsey McGarvey	Emily Sasz
Conner Bayer	Emma Glynn	Courtney McNeil	Angela Schembeck
Kyle Bayer	Gerardine Glynn	Danielle Medina	Sabrina Schembeck
Brandon Borgolla	Adriel Gomes	Savannah Miles	I'Sha Schultz
Brittney Bradley	Destinee Harper	Lauren Modica	Courtney Sebring
Ryan Chester	Willie Jackson	Nicole Neitz	Thomas Sinner
Susan Conforti	Luke Jiorle	Bogdan Nicolescu	Christine Suarez
Shaun Copeland	Nicole Kibui	Rachael Nicolescu	Darius Thomas
Marc Counterman	Cassandra Kreckman	Megan Olah	Dane Van Why
Katherine Cruz	Quindallyn Kreckman	Laura Ortiz	Brandon Vazquez
Eric Deshler	Rachael Lane	Danielle Perez	Dominic Violi
Devin Diaz	Sara Lapping	Jared Pinter	Morgan Wilkins
Jasmine Diaz	Kendell Lowe	Kyla Ramsey	Eric Wolf
Kathryn Dougherty	Harley Louizaire	Alice Rajlai	Irel Zepeda
Stephanie Dougherty	Laila Mahgoub	Stephanie Rosenberg	Gabrielle Zichelli

## Park Security & Caretaker Staff

Judith Bryant	Richard Consavo	Alex Kearn	Salvatore Santana
Sherwood Butz	Jimmie Harris	William Marsh	Melody Shamp
Florence Consavo	Scott Jenkins	Alvin Peterson	

## Volunteers in Parks

Marie Acker	Beth Delay	Riley Kimball	Sue Oiler
Frank Allen	Jim Dellavalle	Evan Koch	Jim Olizarowicz
Sean Anderson	Joey Dougherty	Joanne Kochanski	Bobby Patti
Harold Bacon	Jovan Elkhoury	Melissa Lao	Amanda Paulla
Charles Baughman	Scott Ewing	Wanda Lasher	Jim Phillips
Conner Bayer	Fallon Farina	Sharon Lavedure	Jen Prestipino
Kyle Bayer	Eliazabeth Fleming	Victoria MacDonald	Theo Quinones
Trevor Baylor	Trisha Fulkerson	Chad Martinez	Scott Ramusen
Rich Berew	Danielle Gardner	Haley McClain-Hill	Ramon Rios
Gary Bloss	Erika Gardner	Suzanne McCool	Sarah Rosario
Brandon Brady	Steve Gardner	Meghan McDonald	Angela Schembeck
Kayla Brennan	Ryan Gellner	Jo McEroy	Liane Scofield
John Burrus	Sean Harrison	Theresa Merli	Brandi Smith
June Butler	Jeff Heberley	Don Miller	Mark Sowers
Ray Butler	Samantha Holbert	Ray Moeller	C. Strunk
Mari Cadelle	Home Depot Heroes	Kareen Mohamed	Eva Swartout
Gina Campbell	Andrew Hwang	Thomas Murphy	Nick Tetro
Matt Citron	Jordyn Iacona	Rob Murro	Alexis Thornton
Bradford Cooper	Nick Irwin	Sarah Myles	Dave Trainer
Melissa Crosby	Brandon Johnson	Cooper Nordquist	Robin Trainer
Valerie Davis	Emily Joyce	L. O'Farrell	Dane Van Why
Kim DeBoer	Kessemoa Khalyat	Christopher Ohounslo	Jeff Walters



Maria Ward  
Todd Weitzman  
Susan Welsh

Lauren White  
Linda Wiles  
Garrett Wilson

Anne Wingert  
Sonia Wolbert  
Liz Wright

Ceal Yost  
Emily Zawzewski

## Program Partners

Alice Colin  
American Red Cross  
Carol Petrucci  
Challenger Sports  
Computer Tots  
Deron Erny  
Eastburg Community Alliance  
Fitzmaurice Comm. Services  
Heidi Secord  
Jeff Juell

Jenn Allen  
Joanne Deardorff  
Kathleen McCarthy  
Keith Karkut  
Linda Breen  
Maureen Harms  
Mary Ann Lane  
Melody Severud  
Mountain Knits and Pearls  
Nadya Matychak

Nikki Sajudin  
Pack 'n Paddle Tours  
Paskiet Martial Arts Academy  
Pocono Arts Council  
Pocono Mtn. Kennel Club  
Rosalyn Gilmore  
Thomas Keen  
US Sports Institute

## Community Partners & Sponsors

Aardvark Sports Shop  
Active Net  
Adventure Sports  
Alaska Pete's Roadhouse Grille  
American Red Cross  
American Ribbon  
Animal Welfare Society of Monroe (AWSOM)  
Dr. Annie Mendoza  
Arlington Elementary PTA  
Bath Fitter  
Big Wheel Roller Skating Rink  
BJ's Wholesale Club  
Bloom Flowers & Gifts  
Bovino's Pizzeria & Italian Restaurant  
Brodhead Watershed Association  
Camelbeach  
Camp Brainerd  
Cherry Valley CSA  
Cherry Valley Golf Club  
Cici's Pizza  
Cluck U University  
Compton's Pancake House  
Coppolas Pizza  
Curves  
Cute As Buttons  
Dansbury Depot  
Delaware Water Gap National Recreation Area  
DigiKids  
Earthlight Natural Foods

Eastburg Community Alliance  
East Stroudsburg Area High School South  
East Stroudsburg Area School District  
East Stroudsburg Borough  
East Stroudsburg University  
ESU Bookstore  
ESU Dept. of Modern Languages  
ESU Dept. of Recreation and Leisure Services  
East Stroudsburg Youth Association  
Eastern Monroe Public Library and Bookmobile  
Edge of the Woods Outfitters  
Emily Juárez  
ESSA Bank & Trust  
Feel Kneaded Massage Therapy  
Freedom Gymnastics  
Friends of Stroud Region  
Gary's Meat Market  
Glen Brook Golf Course  
Gramma's Country Corner  
Grandpa Pete's Bagels  
Great Wolf Lodge  
HJP Open Space  
Holy Guacamole Mexican Grill  
Home Depot Heroes  
Hospitality Alliance  
Ichiban  
JR Flooring  
Keith Karkut Entertainment  
Ken & Company

Ken's Auto Service  
 Kids Network  
 Kirkwood Camp & Conference Center  
 Light of the World Church  
 Liztech Gallery  
 Madamedons House of Beauty  
 Main Street Antiques & Collectibles  
 Main Street Jukebox  
 Marilyn's Nursery  
 Merrell  
 Moe'st Everything Muse  
 Monroe County Commissioners  
 Monroe County Community Services  
 Monroe County Conservation District  
 Monroe County Planning Commission  
 Monroe County Trails Commission  
 Morey Elementary PTA  
 Mountain Knits and Pearls  
 Mountain Mutts Grooming Salon  
 Mountain Valley Bikes  
 Mullally's Clubhouse Cafe  
 Natural Lands Trust  
 No Limits Personal Training  
 PA Dept. of Conservation and Natural Resources  
 PA Dept. of Environmental Protection  
 Pack Shack Adventures  
 Pamper Your Pooch  
 Penn State Cooperative Extension Service  
 PennDot District 5  
 Pennsylvania Recreation and Park Society  
 Peppe's Bistro  
 Pierce's Barber Shop  
 Pocono Avian Research Center  
 Pocono Bazaar Flea Market  
 Pocono Country Carriages  
 Pocono Health Systems  
 Pocono Heritage Land Trust  
 Pocono Medical Center  
 Pocono Mountain Kennel Club

Pocono Mountains Visitors Bureau  
 Pocono Plateau  
 Pocono Produce  
 Pocono Pups Day Care, Gourmet Doggie Bakery  
 Pocono Record  
 Pocono Wellness  
 Poke-A-Nose Pottery  
 Schuylkill Valley Sports  
 Sherman Theatre  
 Shoprite  
 Skylanes Bowling Center  
 Sky's The Limit  
 Spiderweave  
 Starbucks  
 Stroud Area Regional Police  
 Stroud Area Regional Tennis Association  
 Stroudsburg Little League  
 Stroud Township  
 Stroudsburg Area High School Students  
 Stroudsburg Area School District  
 Stroudsburg Borough  
 Stroudsburg Intermediate Elementary School  
 Stroudsburg United Soccer Club  
 Sweet Creams Café  
 Target  
 Terra Greens Golf Club  
 The Potting Shed  
 The Salvation Army  
 The Thrift Addiction  
 Trophy Tire  
 Tulpehocken Mountain Water  
 Twin Boroughs Recycling Committee  
 Twin Pines  
 Vertical Earth Mountain Sports  
 Walmart  
 Walmart Foundation  
 Weis/Mr.Z's  
 West End Park and Open Space Commission



# Parks, Livability & the Triple Bottom Line

by Tim Herd, CPRE



*Stroudsburg's historic tree-lined Main Street is a thriving commercial district welcoming all with an attractive streetscape of adequate parking, coordinated traffic signals, well-marked crosswalks, pedestrian-inviting curb extensions and accessibility.*

One episode of the popular *Mythbusters* TV show balanced a sleek limousine on the edge of a rocky 300-foot cliff in an effort to prove or debunk the myth that a mere bird landing on such a precariously perched hood can pitch the car to its doom at the bottom of the ravine.

To pull off such a stunt took quite a bit of thoughtful planning to be able to plunk the car on the precipice without compromising its stability. It was a very interesting episode.

But that dramatic image—of a posh vehicle perfectly balanced over the brink of disaster—lingers in my mind as an apt portrait of the public sector's predicament. How can we meet our immediate needs without compromising the same essentials in our future?

To be vibrantly attractive, a community must find that sustainable sweet spot that balances the health of its economy, environment, and society by wisely investing its fiscal, natural, physical, and human capital.

Investments that bond profitable commerce with environmental sustainability and social equity build strong, livable communities. Such comprehensive and balanced approaches align all three vital obligations into a holistic measure of success, producing what's known as the triple bottom line.

Triple bottom line results reward dividends for all "stockholders" in the community: businesses, institutions and governments; clients, customers, residents and visitors; natural and built living spaces; and all living and nonliving resources.

A noble ideal. But how, exactly, can we prove or debunk that theory?

Lifestyle magazine *Monocle* publishes an annual list of the most "livable" cities in the world, which are ranked by such criteria as safety/crime, public transportation, urban design, tolerance, business conditions, medical care, connectivity, environmental issues and



access to nature. Each one of these benchmarks is impacted by the essential community services of parks, open space and recreation.

No longer regarded as mere purveyors of leisure activities, park and recreation services are a proven and comprehensive system of economic stimulators, environmental stewards, and societal enrichers: all the components of the responsible triple bottom line and the most highly desired livability standards.

With political willpower, enabling policies, stakeholder input and thoughtful planning, the Stroud Region is actively increasing its livability through intentional public and private investments in its park, open space and recreation systems.

## Economic Success

Measuring the economic impact is the easiest to analyze of the livability triplets: simply sort the debits from the credits and you've arrived at the fiscal bottom line, expressed in dollars. However, when linking economic prosperity with the health and welfare of the people and the land, it's important to consider a few more criteria in the economic development plan: Does enabling legislation support innovative, sustainable and diversified business ventures? Are the plans relevant to local development strategies and do they contribute to a more efficient infra-structure? Do they produce or offer employment training and livable wages? Do they support or enhance sustainable practices for existing businesses and green technology jobs?

A recent study by the Political Economy Research Institute documents that building bike lanes doesn't cater only to bicyclists, but also benefits the entire community by creating safer routes, increased accessibility, improved health

outcomes, better air quality, reduced traffic congestion, and increased revenues and jobs for local businesses. The study further verified that for each \$1 million invested in the construction of bicycling infrastructure, the projects create 11.4 sustainable jobs. Even pedestrian-only projects create an average of 10 jobs per \$1 million invested.

The Stroud Region's "Bike to Nature" project is a great start to realizing those same benefits locally by connecting people to the land and resources while increasing tourism, regional partnerships, and sustainable business development. The 23-mile pilot loop will map the connection to nature from historic downtown Stroudsburg to the Cherry Valley National Wildlife Refuge area, with directional and interpretive signage and mobile web access of the route's originations, destinations and linkages. Similarly, improvements, extensions and connections to the multi-use Levee Loop Trail encircling the picturesque Brodhead Creek and the core of the Stroud Greenway promises multiple pathways to prosperity.

*Building bike trails and lanes benefits the entire community by creating safer routes, increased accessibility, improved health outcomes, better air quality, reduced traffic congestion, and increased revenues and jobs for local businesses.*





Larger trail systems with multiple connections between many attractions are a proven lure for netting tourists who deposit development dollars directly into the local economy. In the Pocono Mountains, the tourism and hospitality industry is a \$2.1 billion apparatus, generating some 22,000 jobs in its four-county area, which hosted more than 10 million visitations this past year. Fiscal year 2012 collected a record-setting \$4.6 million in hotel room taxes, which is reinvested into the local economy.

About half of all Americans participated in outdoor recreation in 2011, according to a study by the Outdoor Foundation: a wonderfully ripe and spacious market opportunity for private enterprise. In Pennsylvania, annual recreation-related spending of more than \$4 billion supports over 84,000 jobs and generates some \$770 million in taxes. Bringing some of that home, on Stroudsburg's Main Street, Ready Set Run is a new specialty running store offering shoes and apparel for both men and women as well as a full line of nutritional and sports medicine products. Sky's the Limit Skydiving Center takes off from the Stroudsburg-Pocono Airpark year-round for high free-falling thrills. The Pocono Dome is a multi-sports and total wellness complex with nearly 90,000 square feet under roof, hosting family-oriented sports activities and fitness facilities. And close at hand are all sorts of other attractions for skiing, mountain biking, horseback riding, paintballing, camping, kayaking and many other sporting adventures nestled among the enticing features of our parks, lakes, beaches, trails, and other natural, cultural and historic assets.

But commercial recreation and tourism are not the only economic avenues to building livable cities, of course. Many public works projects,



properly conceived, offer solid traction for further growth. Stroudsburg's \$1.14 million congested

corridor improvement project is streamlining the efficiency of traffic flow through computerized networking of traffic lights, and constructing traffic-calming curb bump-outs and improved lighting, crosswalks and sidewalks. East Stroudsburg Borough has also recently invested \$662,000 in streetscape lighting and pedestrian safety improvements in its downtown area. While such capital improvements to the downtown areas clearly enhance the lure and sustainability of Main Street businesses, their tremendous environmental and social values extend to a cleaner and more attractive community, the promotion of healthier lifestyles, and the prevention of lives lost or injured due to increased commuter safety.

With the construction of Smithfield Township's new \$1.25 million Franklin Hill sewer line, several more livable community-healthy possibilities are enabled. Its first is a re-alignment of the intersection at Route 447 and Franklin Hill Road with a traffic light and crosswalk permitting safe pedestrian passage from the Terra Greens Golf Course and East Stroudsburg Elementary School to the other side of the busy street to sidewalks included in the proposed Westfield Hospital complex. From there, the sewer line's route westward will be topped with a stone-dust trail surface allowing (for the first time from that area) pedestrian access leading to Zacharias Pond Park, Third Street, and the adjacent residential neighborhoods.

The \$5.3 million replacement of the 55-year-old Mill Creek Bridge, expected in 2014, began with an environmental impact assessment, public input meetings, and a design intended to provide solutions for the next hundred years. The new structure will add non-motorized passageways (where none currently exist) of two bike lanes, a sidewalk, and a marked crosswalk to permit the critically-needed connections between the trails to the immediate north, south, west and east of the span: truly a development that connects the triple-bottom-line ideals.



*Glen Brook Golf Club is pursuing certification as an Audubon Cooperative Sanctuary and has lessened its environmental impact by reducing fertilizer use and being more selective with species-specific pesticides, which help improve the water quality of the McMichael Creek and its native fish populations.*

## Environmental Health

In the concept of triple bottom line reporting, environmental benefits can be assigned dollar values and measured by straightforward cash accounting like economic developments. But here too we have a set of criteria to guide investments in our natural, built and historic environments to help meet the goals of a favorable return on our socioeconomic prosperity: Do policies, permitting and plans promote responsible environmental stewardship and “smart growth” that avoids urban sprawl and creates walkable urban centers? Do projects mitigate pollution, increase energy efficiency, preserve or restore critical habitats and watersheds, promote biodiversity, reduce waste, incorporate green technologies, or utilize local resources and products? Do they connect people to nature? Will ongoing operations and maintenance be economically sustainable?

Many progressive municipalities have developed an “Official Map” based on solid zoning and subdivision ordinances and a comprehensive plan to help guide that kind of smart growth. Stroud Township’s official map, developed by its Planning Commission and other authorities,

helps focus its limited financial resources on projects that meet and advance the township’s goals. It maps out future connections and improvements to its streets, sewers, sidewalks and intersections, protects important natural areas, and delineates appropriate possibilities for business and housing developments, green space, recreation facilities, trails, and other public services.

By far, the most cost-effective contributors to our environmental health are provided by our public parks and greenways. Parks improve air and water quality, protect groundwater, prevent flooding and provide vegetative buffers for physical development and wildlife habitat. Some 75,000 tons of air pollutants are removed annually by urban park trees in the U.S. by their mere existence. Ridding ourselves of the same pollution by mechanical means would cost an estimated \$500 million each year.

The Stroud Greenway, centered about the confluence of the Brodhead, McMichael and Pocono Creeks, refers to the holdings of parks, trails and other connective infrastructure managed for conservation and recreation

purposes. Its waterways and vegetative borders provide important wildlife habitat, a retreat for our exercise and recreation, a natural filter for airborne and surface contaminants, and a critical buffer for—as we well know!—nature’s frequent largesse with storm and flashflood.

An abundance of parks not only improves the quality of our land, water and air, but also directly enhances the economic base. The most desirable residential properties—as any real estate professional will tell you (*“Location, Location, Location!”*)—are those in close proximity to parks and natural areas, where home buyers are often willing to spend more for the benefits of their location. Such enhanced property values (up to 20 percent more for those adjacent to parklands) contribute their share of higher taxes to the municipalities, benefitting the public good. Creating or rehabilitating parks has also shown to spur an increase in the value of nearby commercial properties, as well as attract additional businesses and residents.

Parks and open space can also keep taxes lower. Recent research by Texas A&M University shows that the cost of providing services and infrastructure to most new residential developments exceeds the tax revenues generated by the development, so the taxes of existing residents must be raised.

But our parks are not merely passive in their assist to the bottom line of profits, people, and the planet. Glen Brook Golf Club and its 224 acres was saved from likely development when it was purchased by Stroud Township in 2005. Like many other older courses, competition for golfers and increasing operating costs had affected its financial stability. Over the past seven years, the Township has invested many thousands of dollars into improving the course and its operations to keep it a viable concern. A better drainage system and buffer areas are being designed and installed throughout the fairway. Pursuing certification as an Audubon Cooperative Sanctuary for Golf Courses, Glen

Brook is lessening its environmental impact with a few green initiatives, such as reducing fertilizer use and being more selective with better, species-specific pesticides, which help improve the water quality of the McMichael Creek and its native fish populations. The Club’s historic John Stroud House hosts a friendly restaurant and bar operating as Mullally’s Clubhouse Café. A full-service Golf Pro Shop and Golf Bag Storage Area is open year-round, as are overnight accommodations in its picturesque Streamside Guest Suites.

Certainly sound fiscal and environmental management can be practiced simultaneously, as Glen Brook proves. And while the Course caters to golfers, of course, non-golfers are also welcome to hike, jog, bird-watch, fish and cross-country ski on non-fairway areas. Plans for triple-bottom-line strategies in other parks include constructing a pedestrian bridge over the Pocono Creek to link the sidewalk-sparsely Route 611 commercial corridor with the Stroudsburg Area High School campus and Main Street; hard-surfacing a portion of the Levee Loop Trail for improved access for disabled persons; public-private partnerships in developing a large outdoor concert venue in

Glen Park; and enabling intermodal transportation linkages to larger trail systems outside the Stroud Region to connect people, places and purposes in ever-widening opportunities for increased livability in both the private and public sectors.





*Children who have easy access to playgrounds, like those who participate in the Stroud Kids day camp program, are approximately five times more likely to have a healthy weight than children who do not enjoy that same access.*

## Social Prosperity

When we measure the social plusses and minuses of a community investment, the bookkeeping is not as straightforward as it is for strict economic investments. While dollar values can be assigned to social programs, developing those assessments require a more subjective approach: Do they meet basic human needs and ensure public health and safety? Do they address inequities, remove systemic barriers, and offer diverse opportunities and equal access physically, financially and culturally? Do they build capacity to improve personal health, mitigate or solve social problems? And despite the equivocation of attaching dollar values to these issues, who can argue with such very real recreational benefits as those that raise students' physical, mental and social health, increase grade-point averages, while decreasing the social ills of truancy and dropout rates, vandalism, and gang-related violence?

More than 176,000 people live in Monroe County. Despite the pressure of a population that's increased 70 percent in the past 20 years, the region still retains easy access to parks and green spaces, which reduces our overall mortality rate. Recent research on the essential components of a healthy human habitat has shown that in the least green environments, the poorest inhabitants die at two times the rate of the wealthiest individuals.

Regardless of socioeconomic status, being in contact with nature also improves concentration, relieves mental fatigue, boosts



health recovery rates and improves psychological health. Neighborhood trees, like those in Miller Park or along Bryant Street, Greenbrier Drive, East Shore Drive or any number of other streets, decrease levels of fear, incivilities, and violence among residents, decrease crime rates in public housing, and improve the life satisfaction of residents.

In the Stroud Region, many residents live within walking distance of at least one of its 26 regional parks. Such simple proximity to parks, greenways, trails, and waterways leads to safer, cleaner, revitalized neighborhoods, personal and corporate volunteerism, environmental stewardship and a stronger community. Personal involvement in the outdoor recreational pursuits that the parks enable helps to combat obesity, boost the immune system, relieve stress and depression, diminish the risk of disease and increase life expectancy.





The popular Stroud Kids summer day camp and its related enrichment programming provide safe, fun, and engaging stimulation for children ages 4-14. Delivered at a price of just \$2.66 per hour, the comprehensive recreational services are cheaper than hiring a nonrelative as a babysitter—and open a world of opportunities in the local playgrounds, pools and facilities. This past summer, more than 700 local children participated in the structured recreational, educational and social playtime.

According to the Journal of Community Health, children who have easy access to playgrounds, like our Stroud Kids campers, are approximately five times more likely to have a healthy weight than children who do not enjoy that same access.

The Stroud Kids program also engages a significant population of campers with special needs and/or medical conditions: approximately 22 percent of the total enrollment this past summer was mainstreamed with accommodations to help meet individual therapeutic needs. Other studies have shown that the natural play and park settings like those in the Stroud Kids program help improve concentration and reduce the severity of symptoms in children diagnosed with Attention Deficit Disorder and other autistic spectrum conditions.

And while providing a broad range of audience-appropriate recreational programming does incur costs associated with qualified personnel, equipment, supplies, and upkeep on the parks

and facilities, not providing the services, especially to certain at-risk populations, can be more costly. Imprisonment in a Pennsylvania jail costs up to \$35,000 per inmate per year. If each of the 343 local recreation and park agencies in Pennsylvania invested in the difference-making kind of programming that prevents just one individual from winding up in jail, we'd collectively save more than \$12

million! Similarly, a compelling case can be made for programming that improves individual health, ultimately saving vast sums in health care costs. To these ends, the Stroud Region Open Space and Recreation Commission is partnering, along with many other community organizations and individuals, with the Pocono Health System's Wellness and Behavioral Health Work Groups in developing strategies to improve the capacity and effectiveness of working toward a more livable community for all its inhabitants.

## Return on Investment

Remember the *Mythbusters'* car-teetering cliff-balancing experiment? To test the myth that a bird landing on such a precarious car could plunge the vehicle into the canyon, they systematically added weight representing one kori bustard and 26 turkeys to the hood (approximately 700 lbs.!) until destruction was assured—and filmed for the thrill of it all! But we can learn from their extreme example.

Providing for both the immediate and long-term needs of our region is a perilous balancing act for the public sector, requiring purposeful, triple-bottom-line investments in our economic, environmental, and social health and wellbeing. If we shortsightedly tilt too far to favor any one factor over the others, we are in danger of collapsing our entire standard of living. One of the best proven approaches to building these vital pillars of a livable community is in our local parks and recreation system.

# Regional Administration

*The Commission provides professional expertise in recreation, parks, open space, and public education matters, and manages park and facilities rentals, the sale of pool passes, the Day Street Community Center, and the operations of Regional Park Security, Concessions, and the Stroudsburg Pool. The Commission leads in greenway and trail development projects, and assists in open space planning and promotion.*



## National Ranking

The Regional Commission has grown tremendously in the past five years in the depth of its programming, partnering, and management services, and has emerged as a state leader in the recreation and park profession. It has accomplished this with minimal core staff and operating expenses, as compared with all other reporting agencies in the nation.

In 2012, the fulltime staff of just three (one position of which was vacant for all but 6 weeks of the first seven months of the year) supervised its expansion to include 120 more in the summer to deliver the full breadth of program and operating services – an increase of 4000 percent!

Such a degree in the expansion from the few fulltime staff to the number of seasonal, part-time and contract employees is rare in the nation's recreation and parks agencies. In addition, the Commission's operating expenditures per capita are just 31 percent of the nation's median for similarly-sized jurisdiction populations.

Comparative Personnel by jurisdiction parameter	Lower Quartile	National Median	Upper Quartile	SROSRC
<b>Budget: \$500,000–\$1M</b>				
<i>No. fulltime positions</i>	5	5	8	<b>3</b>
<i>No. non-FT positions</i>	12	20	74	<b>120</b>
<b>Size: Less than 10 FT Employees</b>				
<i>No. fulltime positions</i>	2	4	5	<b>3</b>
<i>No. non-FT positions</i>	7	16	45	<b>120</b>
<b>Type: Regional/Metro Authority</b>				
<i>No. fulltime positions</i>	6	15	51	<b>3</b>
<i>No. non-FT positions</i>	20	72	200	<b>120</b>
<b>Population: 20,000–49,999</b>				
<i>No. fulltime positions</i>	8	15	29	<b>3</b>
<i>No. non-FT positions</i>	18	80	200	<b>120</b>
<i>Operating Expenditures per capita</i>	\$41	\$78	\$129	<b>\$24.46</b>

Comparative agency statistics are reported by the National Park and Recreation Association's Park and Recreation Operating Ratio and Geographic Information System (PRORAGIS), an online database and management tool for public park and recreation agencies. The table above shows how the Commission's ratio of fulltime to non-fulltime employees compares with the national range in terms of budget, size, type, population, and operating expenditures per capita.

## New Three-Year Strategic Plan

Communities where parks, greenways, trails, and recreational services play a vital role in the lives of their residents are invigorated places to live. Starting at the beginning of the year, the Commission Board and Staff began researching the current regional issues associated with its mission, which formed the basis for a new three-year Strategic Plan. These issues were grouped into four areas of focus: Economic Stimulation, Environmental Preservation & Stewardship, Health and Wellness, and Social Stability. These focus areas define how well the Commission can meet the recreational and cultural needs of its residents, and contribute to responsible environmental stewardship while providing its core essential services. An analysis of the Commission's strengths, weaknesses, opportunities, and threats has formed the basis for the Plan's specific, prioritized goals. A listing of the Plan's goals and attainment indicators is found in the last section of this report; the full plan can be accessed through the website.

## Grantsmanship

In 2012, The Commission had a very successful year in securing grants for its various projects and partnerships, exceeding one-half million dollars.

Over the past nine years, the PA Department of Conservation and Natural Resources (DCNR) has partnered with the Region for several vital investments in the recreation and greenway infrastructure links to provide the seed money of over \$846,000, which leveraged over 12.5 times that amount for an investment in the community of over \$11.5 million.

amount	source	project
\$ 100,000	DCED	Pocono Creek Bridge
\$ 10,000	DCNR	Glen to Glen Study
\$ 10,000	Monroe Co	Glen to Glen Study
\$ 10,000	Private donation	Bike to Nature
\$ 500	PMVB	Bike to Nature
\$ 16,800	PF&W CLI CAP	Bike to Nature
\$ 2,000	Walmart Foundation	DSCC rubber flooring
\$ 360,272	DCNR	Pocono Creek Bridge
\$ 4,680	Monroe Co CDBG	SK camperships
<b>\$ 514,252</b>	<b>2012 Total</b>	

These investments have included the open space purchases of Glen Brook Golf Club and Terra Greens Golf Course; the development of Stroudsburg Skatepark, Dansbury Trailhead, renovations of the Stroudsburg and East Stroudsburg Bathhouses, and hard-surfacing a section of the Levee Loop Trail; and have funded the following plans and studies: Glen Brook and Terra Greens Master Site Development Plan, the Levee Loop Trail Master Plan, the Brodhead, McMichael, and Pocono Creeks Greenways Plan, and the Glen to Glen Trail Feasibility Study.

*The PA DCNR has granted more than \$846,000 as seed money, leveraging 12.5 times that amount for an investment of over \$11.5 million in our Region!*

## 2012 Leadership Luncheons

To enable a better sharing of mutual issues and partnering opportunities between the Commission and its member municipalities, the Commission hosted a series of informal Leadership Luncheons at the Day Street Community Center. Specifically invited were all SROSRC Board Members, Stroud Township Supervisors, Stroudsburg and East Stroudsburg Boroughs' Council Members, Mayors, and Managers, Stroudsburg Area and East Stroudsburg Area School Districts' Superintendents and Board Members, the Monroe County Commissioners, and the Friends of Stroud Region Board Members.



# Stroud Region Parks Directory

The Stroud Region Parks Directory, after two years in the making, became the first publication of its kind since the member municipalities regionalized its recreation and parks services. The Monroe County Planning Commission provided GIS data and shape files on park properties, and an expert volunteer map maker augmented the information with other GPS data obtained by trail monitors and assembled the full complement of 14 detailed maps showing 26 parks. The 24"x 36" directory folds to a compact 4"x 8" size and features a large regional map on one side identifying the Stroud Greenway, its trails and more than two dozen parks. The other side includes the individual park maps depicting features and facilities, QR code links, and information on facility rentals, park rules, the Commission and its municipalities.



## Park Concessions

### Stroudsburg Boro

The first year for the remodeled Concessions area fared well with the introduction of hot menu items and the replacement of the old pizza oven. The new windows installed for ordering food and picking up food posed some problems but the staff was able to accommodate and meet the needs of the customers. Modifications will be made for next year. Due to internet connectivity issues, the ActiveNet system was not used this season to track sales and inventory, but is expected to be resolved for the 2013 season.

Gross sales for 2012 totaled \$7,775; inventory costs of \$4,869 yielded a net of \$2,906, not counting the wages of the admission and concession staff. While outside food was still allowed at the facility, it was not encouraged. Groups with large picnics were asked to use the Stroudsburg Borough Park's pavilion; all pool patrons were welcome to return to the pool with the daily paid wristband.

### Dansbury Park



better tracking of inventory and financial records.

The Commission managed the Dansbury Park Concession Stand for the second season, and maximized its buying power by purchasing in bulk and sharing inventory orders with Stroudsburg Concessions whenever possible. Two new large color menus were printed and posted in the windows. A computer and internet access was secured for use of the ActiveNet system, but was not in full use until July. Full use of the system in 2013 will enable

Gross sales for the season reached \$33,185, an increase of 18.4 percent over 2011, however, operating expenses increased by 25.7 percent, resulting in a net loss of \$5,854. This is largely attributed to staff wages and a longer operating season this year. Some of the excess inventory remaining after the Stand closed for the season was sold to the East Stroudsburg Youth Association.



# Regional Park Security

In its second year under the responsibility of the Commission, Stroud Region Park Security operated three distinct components covering the most-visited parks in each of the municipalities:

## Park Officer Employees

- 4 Security Officers (32 hours/week, Memorial Day through Labor Day) \* denotes coverage emphasis
- In East Stroudsburg: Dansbury Park\*, Zacharias Pond Park, Gregory's Pond, Miller Park.
- In Stroudsburg: Stroudsburg Borough Park\*, Glen Park, Amhurst Park, Bryant Park.

## Gatekeepers

- 4 Gatekeepers (16 hrs/weekend, May 19 – Sept. 9, plus Holidays)
- In Stroud Township: Brodhead Creek Park, Pinebrook Park.
- Gatekeepers greeted visitors to the parks on weekends and collected \$20/vehicle parking fees from out-of-county residents.

## Contract Security Service

- 16-32 hours/weekend, May 19 – Sept. 9, plus Holidays
- In Stroud Township: Brodhead Creek Park, Pinebrook Park



A Request For Proposals was advertised and awarded to Capital Asset Protection, who began the season with four unarmed officers with overlapping shifts and one armed supervisor in a marked patrol vehicle. Due to lack of visitor overload and issues, the armed supervisor position was eliminated June 20; On August 11, the overlapping portion of the other officers' shifts was eliminated.

Employee Officer wages were offset by field and pavilion rentals collected by the Commission on behalf of Stroudsburg and East Stroudsburg and were split among them according to the number of hours assigned in each municipality. Gatekeeper wages and the Contract Security services were reimbursed by Stroud Township.

Reported accidents/incidents were very few: just six were filed in the entire 17 weeks of the season, including three medical emergencies. Most issues receiving officer attention on a daily basis involved enforcing the ban on smoking, alcoholic beverages, and pets and bikes where applicable.

Visitor capacities at Brodhead Creek Park and Pinebrook Park were respectively set at 170 and 100 people at any given time. However, the parking areas tended to be filled before the limit of individual visitors was reached. These capacities should be tested more thoroughly with respect to the number of cars these visitors arrive in, and adjusted if warranted.



# Public Pools



## Dansbury Pool

The Commission continued to manage sales and promotion of season passes for the Dansbury Park Pool using the online Active Net system. Passes were available for purchase starting in May and throughout the summer. As in previous years, passes were sold at the Day Street Community Center.

Internet access was provided through a seasonal subscription with Blue Ridge Cable allowing computer access for pool pass scans and daily entry sales. The Pool opened for Memorial Day weekend and continued through Labor Day.

Season passes were available in a variety of options: Borough Resident, Smithfield Township Resident, Non-Resident, and Dual Pool, and increased by 8.7 percent over 2011, most significantly in Resident Family passes.

Daily entries for 2012 season enjoyed an 11.2 percent increase over 2011. This modest increase is attributed to an on-time opening and a fairly dry and warm summer. ActiveNet reports a total of \$51,687 in daily admissions.

Dansbury Pool Season Passes	2012	2011	Dual	
			2012	2011
Resident Adult	6	3	0	
Resident Family	52	37	2	
Resident Teen	1	3	0	
Resident Youth	4	2	1	
Resident Senior	5	5	0	
NR Adult	0	1	0	
NR Family	0	8	1	
NR Teen	0	0	0	
NR Youth	0	0	0	
NR Senior	0	0	0	
Housing Authority	31	28	0	
Smithfield Adult	0	0	0	1
Smithfield Family	4	9	3	5
Smithfield Teen	0	0	0	
Smithfield Youth	0	0	0	
Smithfield Senior	1	0	1	1
<b>Total</b>	<b>104</b>	<b>96</b>	<b>8</b>	<b>7</b>

Dansbury Pool Daily Admissions	2012	2011
Resident Adult	2,010	1,897
Resident Family	1,300	1,002
Resident Teen	843	886
Resident Youth	1,967	1,823
Resident Senior	160	120
NR Adult	1,475	1,259
NR Family	469	431
NR Teen	310	263
NR Youth	1,440	1,292
NR Senior	105	106
Smithfield Adult	28	21
Smithfield Family	19	6
Smithfield Teen	3	16
Smithfield Youth	36	21
Smithfield Senior	2	2
<b>Totals</b>	<b>\$10,167</b>	<b>\$9,145</b>

## Stroudsburg Pool

The Stroudsburg Pool enjoyed a productive and successful season. A new ADA ladder was installed, new pool rule signs were created, recycling became a reality and a new picnic table arrived. An Assistant Manager Position was implemented and proved effective in the overall management scheme. Due to a combination of factors, the Stroudsburg Pool opened the weekend after Memorial Day, June 2. Special events of Pirates Day and Dive-In Movies complemented the daily activity of the pool.

Season passes were available in a variety of options: Borough Resident, Stroud Township Resident, Non-Resident, and Dual Pool. Paid passes increased 8.7 percent for regular season passes over 2011. Free Housing Authority passes increased 25 percent.

Stroudsburg Pool Season Passes	2012	2011	Dual	
			2012	2011
Resident Adult	3	0	1	1
Resident Family	29	16	4	5, 2
Resident Teen	1	1	0	0
Resident Youth	0	2	1	0
Resident Senior	2	1	1	1
NR Adult	1	0	0	0
NR Family	3	5	0	0
NR Teen	0	0	0	0
NR Youth	0	0	0	0
NR Senior	0	1	0	0
Housing Authority	15	6	0	0
Complimentary	14	14	0	0
Township Adult	0	0	0	0
Township Family	2	7	5	3
Township Teen	0	2	0	0
Township Youth	0	0	0	0
Township Senior	0	1	2	0
<b>Total</b>	<b>71</b>	<b>56</b>	<b>14</b>	<b>12</b>

The Dual Pool Pass allows residents of East Stroudsburg Borough, Stroudsburg Borough, Stroud Township, and Smithfield Township to patronize both pools using one pass. A total of 14 passes were sold at the Stroudsburg Pool, with 4 resident family, 5 township family, and the remainder in the adult and senior categories. This was an increase of 8.5 percent from 2011 and it is recommended we continue the Dual Pool Pass option next season.

Stroudsburg Pool Daily Fees	2012	2011
Resident Adult	1,445	585
Resident Family	552	220
Resident Teen	692	377
Resident Youth	1,442	534
Resident Senior	159	72
NR Adult	80	161
NR Family	31	38
NR Teen	14	25
NR Youth	70	178
NR Senior	3	14
Township Adult	298	1,072
Township Family	131	466
Township Teen	158	852
Township Youth	347	1,285
Township Senior	50	156
<b>Totals</b>	<b>\$5,472</b>	<b>\$6,035</b>

Daily entries for 2012 saw a 9 percent drop from 2011. This may have been influenced by the fact that the Dansbury Pool opened at a comparable time to Stroudsburg, unlike the previous year when Stroudsburg Pool honored Dansbury season passes until Dansbury's leaks were repaired and the pool opened.

Three 3-week swim lesson sessions provided 30-minute classes five days a week. Swim classes for 138

participants yielded \$6,548, a slight increase over 2011. A 50 percent discount was provided to families with three or more children in the lessons.





## Other Park Management Projects



### Pavilion Bulletin Boards

Custom-built cedar bulletin boards and info racks were mounted on the pavilions in Dansbury, Zacharias Pond, Big Pines, Brodhead Creek, Stroudsburg Boro, and Albertson Parks. A member of the Volunteers in Parks visited each weekly to re-stock the racks and post pavilion reservation notices.

### Facility Rentals

In 2012, the Commission managed **253** reservations of parks, pools and facilities, and another **258** at the Day Street Community Center.

### Recreational Facility Notice Signs

New notice signs, with QR codes for fast smart phone links to the proper webpage, were installed at park athletic fields and courts notifying organized groups to reserve and pay rental fees for the use of the facility.

### New Dansbury Play Structure

The old wooden play structure in Dansbury Park, installed in 1988, was replaced in March with a new metal and plastic structure manufactured by Playworld that conforms to all the latest accessibility and safety regulations. One hundred cubic yards of engineered wood fiber filled the play zone to meet ADA requirements. Rubber safety mats were also installed around the merry-go-round and covered with wood fiber.



### Stroudsburg Skatepark

After years of struggling with continual vandalism and damage and the associated costs of maintaining the Stroudsburg Skatepark, Stroudsburg Borough Council closed the park in March for the remainder of the year. In 2013, the Council will consider reopening the park or converting its use to an alternate recreation facility.



### Dansbury Park restrooms

Architect John Schoonover designed an upgrade to the restroom facilities in Dansbury Park and increasing the number of toilets and sinks for both men and women. The opinion of probable cost for the project is estimated at \$132,000.



## Recycling in the Parks

The Commission identified eight Regional Parks to establish commingled recycling collection utilizing 16 permanent outdoor containers. PA Act 101 mandates the boroughs and the township residents—and municipally-owned facilities such as the parks—to recycle. Recycling containers were purchased and placed in Amhurst, Big Pines, Brodhead, Creekview, Dansbury, Pinebrook, Stroudsburg Boro and Zacharias Pond Parks. They were serviced by a seasonal park caretaker, who delivered the recyclables to Twin Boros dropoff center.

## Rules & Regulations in Spanish

The Stroud Region Parks and Facilities Rules and Regulations was translated into Spanish by East Stroudsburg University student Emily Juárez and edited by Dr. Annie Mendoza of the Modern Language Department, East Stroudsburg University.

## Other Improvements and Notes of Interest

- In July, Creekview Park hosted the PA State Little League Tournament with teams from all over the state.
- A new backstop in Dansbury Park was constructed in December by American Fence, financed by the East Stroudsburg Youth Association.
- PA Local Parks Mapping Project. The PA Department of Conservation and natural Resources is in the process of creating a statewide local parks GIS data layer for use by municipalities as well as the general public. The Stroud Region Parks have been added to the database.
- Investigated the possibility of permanently preserving the East Stroudsburg reservoir properties through The Nature Conservancy and the Forest Stewardship Council's forest management certification and forest carbon credits program.



## Regional Parks and Open Space

Twenty-six regional parks comprising nearly 830 acres, and 18 more open space properties totaling an additional 1,882 acres, are owned by the Commission's municipal members and contribute to a high quality of life in the Stroud Region. In addition, Stroud Township holds conservation easements on another 392 acres. The Commission published a Regional Park Directory this year. Park maps and facilities information can also be found on the website.

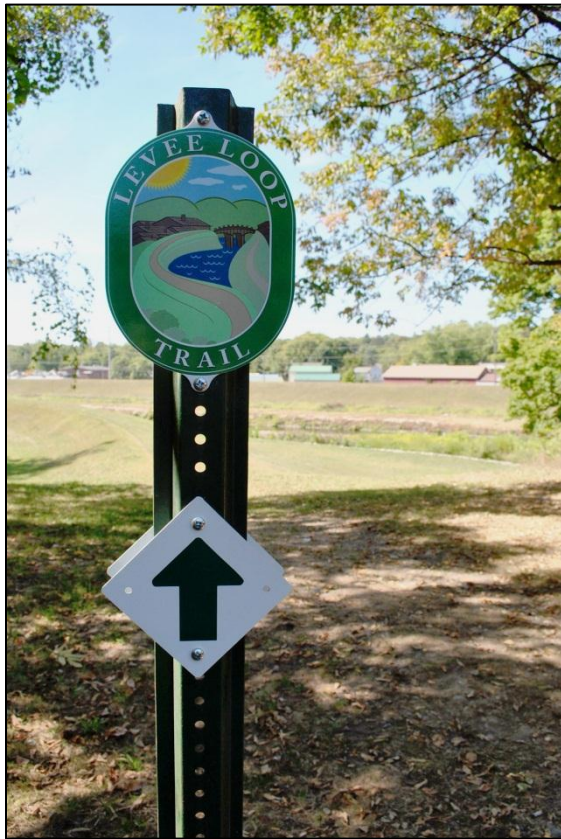


Stroud Region Parks		Acres	Open Space Properties	Acres
Ann Street Park	<i>Ann &amp; Broad Streets</i>	.35	between Rtes. 209 & 80	2.6
Big Pines Park	<i>Brown Road</i>	25	along Brodhead Creek south of Rt.80	5.64
Brodhead Creek Park	<i>Route 191</i>	30	Flood Control project properties	34.2
Bryant Park	<i>Bryant St. &amp; Park Ave.</i>	.25	Flory Pond	3.82
Creekview Park	<i>off Avenue C</i>	35	E.S. Reservoir properties	1,548.8
Dansbury Park	<i>Day Street</i>	15.7	Peeney property	25.3
David Miller Park	<i>S. Kistler Street</i>	1.2	end of Park Street	21.76
Glen Brook Golf Club	<i>Hickory Valley Road</i>	224	behind CSA	20.63
Glen Park	<i>Collins Street</i>	9.8	off Shafer School House Road	4.24
Gregory's Pond Park	<i>Poole Road</i>	16.1	along Hallet Road	122.94
Helen Amhurst Park	<i>Third Street</i>	1.5	along PA Rte. 191	50.33
Hickory Valley Park	<i>Hickory Valley Road</i>	100	along Stokes Ave.	.88
Jay Alberston Park	<i>Wallace Street</i>	5.3	LR 45064	3.93
Katz Park	<i>Wedgewood Lake Dr.</i>	7.2	along Bonnie Drive	.51
Kovarick Park Lands	<i>McMichaels Drive</i>	13	along Stokes Mill Road	2.50
Laurel Street Pond	<i>Clearview Avenue</i>	1.5	along Stokes Mill Road	27.36
Michael Moore Park	<i>White Birch Street</i>	.5	along Stokes Mill Road	6.0
Pinebrook Park	<i>Route 191</i>	60	east of LR 45064	.48
Red's Park	<i>Route 191</i>	1.3	<b>total</b>	<b>1,881.92</b>
Rotary Creek Park	<i>Broad Street</i>	1.25	<b>Conservation Easements</b>	
Stroudsburg Boro Park	<i>off Main Street</i>	59.3	along PA 447/ Wicks/Oiler	81.33
Terra Greens Golf Course	<i>Route 447</i>	111	along PA 447/ Wicks/Oiler	2.64
Totts Gap Trailhead	<i>Totts Gap Road</i>	32	Mervine Lane/ David	125.30
Westgate Park	<i>Main St. &amp; Dreher Ave.</i>	.15	Mervine Lane/ David	27.50
Yetter Park	<i>off Roosevelt Street</i>	40	Poplar Valley Road/ M. Swed	13.82
Zacharias Pond Park	<i>East Third Street</i>	36.5	Poplar Valley Road/ C. Swed	16.86
			Pleasant Ave./ Beagle Club	124.60
	<b>total</b>	<b>827.9</b>	<b>total</b>	<b>392.05</b>



# Greenway Projects

*Investments in bikeways, trails, pedestrian bridges, park facilities, and connective links to popular destinations and events are a proven economic stimulus, and connect people to their natural environment that restores personal, societal and environmental wellness. Stroud Greenway initiatives promote economic stimulation, environmental sustainability, healthful lifestyles, and alternative transportation methods and routes within the Stroud Region.*



## Trails & Trail Systems

### Levee Loop Trail

Encircling a picturesque portion of the Brodhead Creek's coldwater fishery, the Stroud Region's core trail system allows non-motorized forms of transportation to easily connect with seven public parks, two playgrounds, two skate parks, a dozen ball fields, two public swimming pools, two fishing ponds, one disc golf course, a regular golf course, eight schools, a university, a Community Center, and the historic downtown districts of Stroudsburg and East Stroudsburg—as well as many other community resources and trail linkages to further destinations.

- **Hard Surfacing Project.** East Stroudsburg Borough has received a development grant from the PA Department of Conservation and Natural Resources (PA DCNR) to create a hard surface on the most used segment of the LLT from the Veterans Memorial Bridge northward on the eastern side to the Dansbury Trailhead. The surface will be more accommodating to all users and visitors, including those currently underserved because of physical or social handicaps.

Instead of asphalt, however, the project will use pervious materials developed by Penn State's Center for Dirt and Gravel Road Studies, which is more permeable and less expensive than asphalt. The project will be constructed in 2013.

- **Trail Improvements.**
  - Volunteers improved the LLT's access, safety, delineation and appearance just north of Creekview Park where the route crosses the floodplain, silt and cobblestone area.
  - PennDOT completed remediation work on stabilizing 200 feet of the Brodhead Creek streambank along the LLT and Stokes Mill Road in June.
  - Volunteers documented the directional route signage needs along the LLT, including a possible realignment through Creekview Park.



- **Possible route relocations.**
  - The East Stroudsburg HS Cross-country Team proposed relocating the trail to the south and west of the athletic fields along a route the team already runs through a grassy area and along the Brodhead Creek to the section leading directly to Yetter Park. Such a change and its maintenance could be conducted by the School District.
  - A change in the route of the LLT through Creekview Park was proposed to Stroud Township to shift the trail off the access road through the natural area south of the ballfields to connect with the existing streamside spur trail.

## **Brodhead Creek Regional Authority trail extension**

The Brodhead Regional Authority (BCRA) is in the process of transferring title to Stroud Township of a linear pathway on the western streambank of the Brodhead Creek from Stokes Avenue north to Brodhead Creek Park and is committed to building the connector trail. The pathway will be incorporated as a northward extension of the Levee Loop Trail from Yetter Park to Brodhead Creek Park.

## **Trail Easements**

- A new map of the property reflecting the loss of land in recent flooding was prepared and submitted to the Moose Lodge for its consideration of the proposed trail easement.
- Continuing discussions were held with ESSA Bank and Trust on the bank's conditions and parameters for a trail easement on its headquarters property along the McMichael Creek.

## **Glen to Glen Trail Study**



The Commission received a planning grant from the PA DCNR for a "Glen to Glen Feasibility Study." Its purpose was to research the feasibility of establishing an intermunicipal Glen to Glen Trail through a number of publicly and privately owned properties; its linkages between two regional parks, Glen Park and Glen Brook Golf Club, their recreation facilities, adjacent lands, and the Levee Loop Trail; and the associated program, facility, and management possibilities the trail system would

afford the residents of the Stroud Region. The \$10,000 DCNR grant was matched by a Monroe County Open Space planning grant. At year's end, the Commission was awaiting the final draft of the study conducted by Simone Collins Landscape Architecture.

## **Franklin Hill to Third Street Trail**

A new walking trail will be constructed by Smithfield Township as part of its new sewer line extension from the traffic light at Franklin Street along the south side of Route 447 and the proposed Westfield Hospital site to Third Street. The trail will create a nonmotorized route from JT Lambert Intermediate School, East Stroudsburg Elementary School and Terra Greens Golf Course through a safe crosswalk at a realigned Franklin Street intersection to Zacharias Pond Park.

## Pinebrook to Brodhead Creek Park Connector

Volunteers flagged a possible route on public land to connect Pinebrook and Brodhead Creek Parks; an application for a grant for its partial construction was made to the National Trails Foundation in December.

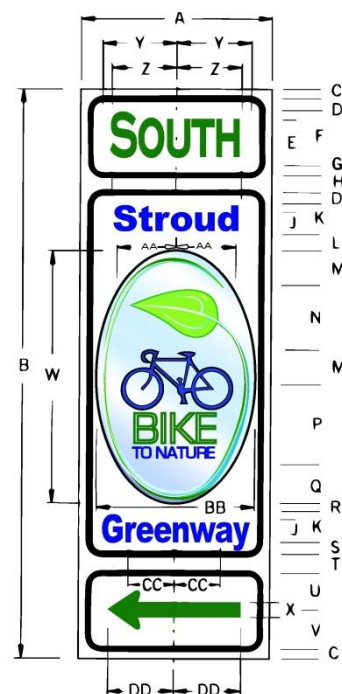
## East Stroudsburg Schools Connector

A walking trail connecting the JT Lambert Intermediate School with East Stroudsburg Elementary through the Terra Greens Golf Course has been substantially completed. A short section climbing the side of a hill behind Terra Greens is expected to be completed in the coming year.

## *Bike to Nature:*

## Stroud Region Bike/Ped Network

Early in 2012 the Commuter Safety Study Committee identified and mapped a network of routes and connecting nodes in an effort to identify and implement methods to increase commuter safety among all modes of travel in the region. The Friends of Stroud Region secured a \$16,800 Pocono Forest and Waters Conservation Assistance Program grant, matched by cash and in-kind support to design and implement a 23-mile pilot Stroud Greenway “Bike to Nature” bike route loop. The Pocono Mountain Visitors Bureau will assist in developing and distributing a companion brochure highlighting the route and interpretive sites along the route. The project will be completed in 2013.



## Pocono Creek Pedestrian Bridge

Basic engineering and financial data from the 2011 Four Pedestrian Bridges Feasibility Study was used to obtain a grant of \$100,000 toward the construction of the Pocono Creek bridge to the PA Department of Community and Economic Development (DCED) through the Monroe County Local Share Account. Using that as a qualifying match, the Commission further secured a \$360,272 grant from the Pennsylvania Recreation Trails program administered by the Department of Conservation and Natural Resources.

Together these grants will fund the design and construction of the critically-needed span over Pocono Creek to connect Knights Park, Stroudsburg HS campus, and Borough Park. This bridge will improve travel safety, mobility, energy/cost efficiency, and environmental quality in urban Monroe County. It is a pivotal piece of infrastructure for moving students and residents of Stroudsburg and Stroud Township



between important civic and commercial destinations on both sides of Pocono Creek without the use of motor vehicles. The 140-ft-long bridge will eliminate the 2.2 miles of roadway travel currently required between Knights Park and the Stroudsburg HS campus, and will allow residents and students to walk or bike to the School, Park or Borough center. Auto travel through the Township on Route 611 (20 minutes one-way, peak periods) will be eliminated for users of this 5-minute alternative route.

# Godfrey Ridge Open Space Management

Monroe County owns the open space tract known as Godfrey Ridge that abuts Glen Park and is bordered on the north by the Brodhead Creek. A series of informal trails network the property, which is a key link to establishing a walking and biking route between south Stroudsburg and Delaware Water Gap—including extended connections to the Appalachian Trail, the Delaware River National Scenic Water Trail, and the Delaware Water Gap National Recreation Area's McDade Trail and other outdoor recreational facilities. An agreement between Monroe County and the Stroud Region Open Space and Recreation Commission has been drafted to provide for the physical and programmatic management of the Godfrey Ridge tract.



## Greenway Linkages

The Greenway Committee identified a list of 33 trails, connectors, improvements and other greenway-related projects that will be incorporated into the broad priorities of the 2013-2015 Strategic Plan and the specific annual Work Plans over the next few years as funding, external circumstances, and other opportunities align.

- **Pinebrook-to-Paradise Trail.** Pinebrook Park to the Paradise Twp open space.
- **Residential Connections.** Promote and assist with trail connections to Penn Estates and Blue Mountain Lake.
- **Pinebrook to Brodhead Connector.** Brodhead Creek Park to Pinebrook Park.
- **BCRA Trail.** New trail connecting LLT to Brodhead Creek Park through BCRA property transferred to Stroud Twp.
- **E.S. School Connector.** JT Lambert with ES Elem. through Terra Greens.
- **ES School & Terra Greens to Zacharias Pond.** Improved intersection and crosswalk at Franklin Hill, sidewalk along proposed Westfield Hospital campus, trail along Route 447's new sewer line westward leading into Zacharias Pond Park.
- **Gregory's Pond Loop Trail.** North from Gregory's Pond into Terra Greens, south towards ES Elem., west along Poole Road.
- **Zacharias-Gregory Connection.** Safe pedestrian crossing (underpass?) of Route 447 and associated trails.
- **Mill Creek Bridge.** Sidewalk and bike lanes on the reconstructed Creek Road bridge. PennDOT project to start in 2014.
- **LLT on Stokes Mill Road.** Establish safe route and surface along Stokes Mill Rd.
- **Ziegler and Moose Easements.** Obtain permanent access through Ziegler and Moose properties for LLT.
- **Clearview Trail.** Connecting Clearview Elem to the LLT, spur to neighborhood containing Michael Moore Park.
- **Laural St. Pond Improvements.** Small parking area, benches, loop trail?



- **LLT Directional Signage.** Post signs clearly marking the entire LLT.
  - **LLT Safety and Interpretation.** Numbered locations that act as both safety locators and interpretive stops. Interpretive info available in brochure and via QR codes.
  - **Creekview Crossing.** Pedestrian bridge or stepping stones connecting Creekview Park to the East Stroudsburg HS South campus.
  - **Creekview Trail Improvements.** Place gravel on new trail at the southern end of Creekview Park and use as part of LLT.
  - **Big Pines Park Trail.** Complete trail through Big Pines Park from the Eagle Scout bridge up to the ballfield and pavilion. Loop trail?
  - **Flagler Run Trail.** Establish trail from Big Pines Park through Mountie Mountain to the Stroud Mall and/or Arlington Elem and the Eastern Monroe Public Library.
  - **LLT Hard Surfacing.** Between Dansbury Trailhead and Veterans Memorial Bridge.
  - **Amhurst Park Connector.** Ramp down the levee onto N. First St. near Amhurst Park.
  - **ESSA/McMichael Trailhead and trail.** ESSA parking lot to McMichael Creek.
  - **Borough Pedestrian Loops.** Establish 1 and 2-mile walking loops through both boroughs and provide maps and signs.
  - **Ann St-Interboro Connection.** Open up access to both ends of the levee between the Veterans Memorial Bridge and Ann St.
- **Park, perhaps under the Broad St. Bridge.**
  - **Pocono Creek Bridge.** Pedestrian bridge connecting Stroudsburg HS to Knights Park, and associated trails to Arlington & Morey.
  - **Rotary Creek Park Rebuilding.** Repair after 7th St Bridge work is done.
  - **Storm St. Connection.** Connect downtown Stroudsburg to Glen Park.
  - **Twin Boros Recycling Bridge.** Pedestrian bridge connecting Glen Park to the Twin Boros Recycling Center area.
  - **Glen to DWG Connection.** Trail connecting Glen Park to DWG via Godfrey Ridge.
  - **Glen to Glen Trail.** Trail connecting Glen Park to Glenbrook Golf Course area.
  - **Kovarick Park Trails.** Build loop trail and spur through Kovarick Park Lands.
  - **Hickory Valley Crossings.** Build 2 stepping stones crossings of the McMichael Creek to gain access to Hickory Valley Park.
  - **Bike to Nature.** Bike route connecting downtown Stroudsburg, parks, Cherry Valley and historic and cultural destinations.



# Related Connectivity, Planning & Funding Issues

## Monroe County Open Space, Recreation and Greenways Plan Update

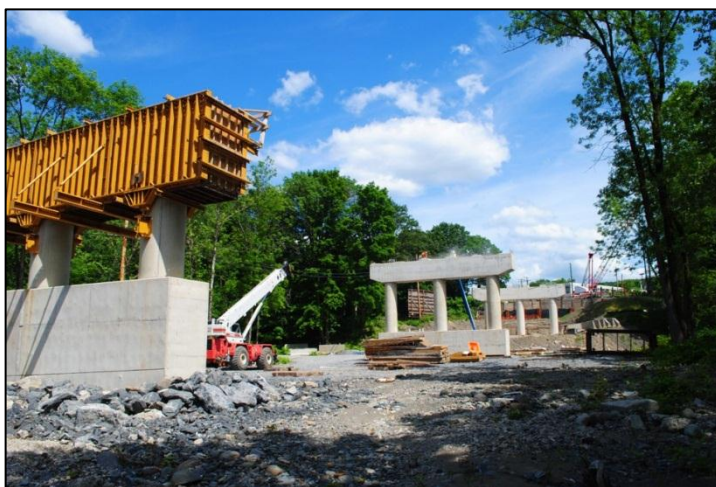
The Monroe County Open Space Program is at a critical point where it is necessary to determine how to move forward with continued land protection efforts and renew its commitment and investment to insure a balance of conservation and development. The County is undertaking an Update to its Open Space, Greenways and Recreation Plan that will review the accomplishments of the past ten years, establish the goals and objectives to be achieved over the next ten years, and emphasize the need for connections and continued implementation of its initial vision: “Forever Green,” a county with parks and open space lined with green infrastructure.

## Monroe County Open Space Referendum

Despite positive polling data suggesting strong support among likely Monroe County voters in favor of a new open space bond, the County Commissioners voted against placing the referendum on November’s ballot. The Monroe Citizens for Open Space committee continues to plan public education opportunities and strategize for future funding solutions.

## Local Bridge Replacement Projects

**Seventh Street.** After 18 months of construction, Stroudsburg’s Seventh Street Bridge spanning the McMichael Creek and Interstate Route 80 re-opened to pedestrian and vehicular traffic in December. Located under the bridge, Rotary Creek Park was used as a construction access and staging area for the massive project. Stroudsburg Borough has \$28,000 on deposit from PennDOT for use in restoring the park.



**Mill Creek Road.** In mid-June, Stroud Township hosted a public information meeting with representatives of PennDOT and its contractor, McCormick Taylor, to present their plans for the replacement of the aging span over the Brodhead Creek (linking west and east sides of the Levee Loop Trail). Slated to begin in 2014, the new bridge will include two 11-foot travel lanes, two 5-foot shoulders (for use by bikers), and a curbed downstream sidewalk, along with a marked pedestrian crossings to enable safer transit from the trail along Stokes Mill Road to its extension northward on the BCRA property to Brodhead Creek.

## Keystone Fund

A proposed elimination of the state Keystone Recreation, Park and Conservation Fund by the Corbett administration prompted a flurry of letters to members of the Senate Appropriations Committee and other state legislators to urge their support in keeping the fund. Most who responded indicated they would. A letter written by T. Herd to the legislators and forwarded to P. Heeschen, Opinion Page Editor of the Pocono Record, prompted her to write and publish the editorial of 2/16: Parks, playgrounds benefit everyone. That same editorial was picked up and hyperlinked in the following week’s NRPA Weekly News digest of recreation and park-related issues from around the country. The Keystone Fund was ultimately saved from elimination.

# Advocacy & Community Education

*Cultivating a wide variety of communication and program delivery methods to reach all the different demographic segments of the public it serves, the Commission produces a continual public outreach of advocacy and education.*

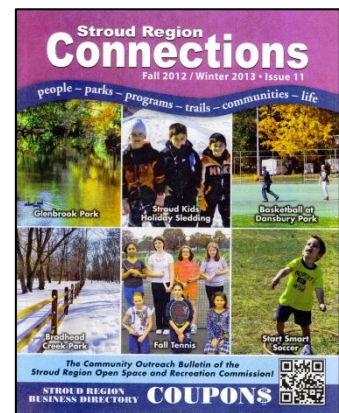
## Media Distribution

During 2012, 444 separate reports, stories, announcements, letters, Op-Ed articles, features, press releases and other promotional materials were generated and tracked in the local and statewide media, which has contributed in many ways to the growing numbers of program clients, park visitors and overall interest and support of the region's recreational opportunities, park facilities, and greenway projects.

## Printed Publications

### ***Stroud Region Connections***

Issues 10 and 11 of offered public information, education, and promotion of *people—parks—programs—trails—communities—life* to all who live, work, or play in the Stroud Region. The award-winning biannual publication directly reaches over 17,000 Stroud Region households by carrier-route-sorted bulk mail, and is distributed free at park kiosks, municipal offices, and other public places. Electronic versions are also accessible through a link on the Commission website.



### **Stroud Region Parks Directory**

After two years in the making, the new directory of park facilities and maps became the first publication of its kind since the member municipalities regionalized its recreation and parks services. See more about the directory in the Regional Administration section of this report.

### ***Help Us Make the Connection Advocacy Campaign***

To help enlist public and popular support of regional parks, open space, greenways, trails, and recreation, Commission Staff and volunteers contributed to a periodic series of educational articles by advocating their economic, environmental, social, recreational, cultural, and wellness benefits.

The series included:

- *Recreation Trails and Green Spaces*
- *What is a Greenway?*
- *Save the Keystone Fund and Invest in Community*
- *Parks are Green Infrastructure*
- *Celebrate Life and Family Outdoors*
- *Get Outdoors in PA*
- *Parks, Livability & the Triple Bottom Line*



## Electronic Media



### Facebook and Twitter

Popular usage of Facebook and Twitter continued to grow through the year as more users became fans of Stroud Region Recreation, and enjoyed and shared news, photo albums, and spontaneous announcements. At the end of the year, the Commission's Facebook page boasted 339 Lifetime Likes.

### E-newsletters

A monthly electronic newsletter greets more than 1870 recipients on the mailing list highlighting upcoming events and programs. A separate bi-weekly e-newsletter, the **SR Huddle**, was written and disseminated to the summer seasonal staff. Special announcements are also occasionally disseminated via the electronic newsletter format.

### Websites

The Commission's website continued to grow in its vital role as the electronic hub of the Commission's advocacy and community education program. Statistics for the year include 18,128 Unique visitors (up 36% over 2011); 25,239 Visits; 62,540 Pages Viewed, 403,195 Hits (up 59% over 2011); and Bandwidth of 37.8 GB.

Volunteer Mark Sowers took over the design and maintenance of the website and added new pages and features, including direct feeds from the Facebook posts, links to all park maps, and a Where Am I interactive quiz with photos from Stroud Region Parks.

A new website, **stroudgreenway.org** came online in January, and is linked with the Greenway tab on the main Commission website. It features pages on the various greenway, open space and recreation plans, and regional trail systems with trail and park maps. Mike Wolbert of SpiderWeave.com donated his expertise and content management system to get it operational.



## Public Presentations

### Presentation to Governor Corbett

At the invitation of the PA DCNR in August, Executive Director Tim Herd was invited to present to Governor Tom Corbett at the Shawnee Resort on regional trail connections and Keystone Fund investments in regional conservation work and its economic impacts. The Governor wrapped up his two-day kayak tour of the Upper Delaware River to promote tourism in Pennsylvania and to draw attention to the rivers, forests, parks and other natural assets the state has to offer.

### Other presentations:

- Public Administration Class, ESU
- Intro to Recreation Class, ESU
- *Transformational Leadership*, PRPS Annual Conference
- Cherry Valley Festival
- Stroudsburg IE School Open House
- *Building With People*, PA Therapeutic Recreation Institute
- Friends of Cherry Valley Annual Meeting
- ARC Certification for Lifeguard, CPR and First Aid

# Recreational & Cultural Programming

*The comprehensive Regional Program encompasses year-round recreational, educational, cultural, and environmental activities and services for all who live and work in the Stroud Region.*

In 2012, Staff and Program Partners conducted 765 program sessions engaging a total of 23,182 participants, including the following structured Programs in the Day Street Community Center, Regional Parks, area school facilities, and other off-site venues:



Adult Lap Swim/Water Walking  
Adult Tennis  
ARC Adult CPR/AED  
ARC CPR Professional Rescuer  
ARC First Aid Training  
ARC Junior Lifeguard  
ARC Learn to Swim Lessons  
ARC Lifeguard Certification\*  
ARC Pediatric CPR Training  
ARC Water Safety Instructor\*  
Advanced Crochet\*  
Advanced Knitting\*  
Beginner Crochet\*  
Beginner Hand Sewing\*  
Beginner Knitting\*  
Beginner Machine Sewing:  
    Straight Stitch\*  
Canoeing the Delaware\*  
Challenger Soccer\*  
Competitive Clinic Swim  
Creative Finger Foods  
Digital Moviemaking\*  
Dive In Movies  
Dog Obedience – Beginner\*  
Dog Obedience – Rally\*  
Fall Foliage Excursions\*

Family Swim Fridays  
Fitzmaurice Gym  
Girl Scout Yoga Fun Patch\*  
Green Thumbs Workshop  
Hand Sewing: Doll Making\*  
Hand Sewing: Embroidery\*  
Herbal Body Care\*  
Hollywood Girls  
Individual Writing Critique\*  
Intermediate Crochet\*  
Intermediate Knitting\*  
Intro to QiGong\*  
Jiu-Jitsu – Beginners\*  
Jiu-Jitsu – Jr. Grapplers\*  
Jiu-Jitsu – Little Champs\*  
Karate – Adult\*  
Karate – Youth\*  
Kids Night Out  
Kids Yard Sale  
Let go of my Lego  
Let's Do Robotics\*  
Levee Loop Trail Run  
Levee Loop Walk  
Lifeguard Certification  
Lights, Camera, Action\*  
Little Tots Gym

Machine Sewing:  
    My First Patchwork\*  
    My First Quilt\*  
Make Your Own Doll Clothing\*  
mEGGa Hunt  
Memoir Writing\*  
Muck-n-Mess  
Nature and Wildlife Camp  
Octoberfest  
On Farm Learning Camp  
Parents Night Out  
PTA ChildCare  
Philadelphia Flower Show Trip  
Pilates Sculpt\*  
Play-Doh Playtime  
Pooch Plunge  
Princess Club  
Qi Workshop\*  
Rahz Chair Fitness\*  
Rahz Fitness Circuit Training\*  
Ralley Ball Tennis\*  
Reiki\*  
Rock & Roll Robotics\*  
Start Smart SportsDevelopment  
Start Smart Youth Basketball  
Start Smart Youth Golf

Start Smart Youth Soccer  
 Story Time with Bookmobile\*  
 Stroud Kids – Dansbury  
 Stroud Kids – Morey  
 Stroud Kids – SHS  
 Stroud Kids After Camp  
 Stroud Kids Before Camp  
 Stroud Kids Extension  
 Stroud Kids Extension – Before  
 Stroud Kids School Holidays  
 Stroud Kids Holidays – After  
 Stroud Kids Holidays – Before

Stroud Kids Basketball  
 Stroud Kids Tennis\*  
 Stroud Tots – Full Day  
 Stroud Tots – Half Day  
 Teen Beginner Tennis\*  
 Theatre Enrichment Camp  
 USSI Multi Sports Camp\*  
 USSI Sports Squirts Camp\*  
 USTA Team Tennis\*  
 Video Game Animation I & II\*  
 VolunTeens Enrichment Camp  
 Walk Live

Water Aerobics\*  
 Writers Workshop\*  
 Yoga with Nadya\*  
 Yoga in the Park\*  
 Yoga on the Ball\*  
 Young Actors\*  
 Young Artists\*  
 Youth Tennis\*  
 Zumba\*

\* conducted by Program Partners

## First Annual mEGGa Hunt

The “Ultimate Easter Egg Hunt” on April 1 at Dansbury Park drew 189 registered participants and raised \$2,731 toward a new gym floor for the Day Street Community Center. The result of a public/private partnership with Karkut Entertainment, the mEGGa Hunt offered children and families a uniquely entertaining day outdoors with face painting, air brush tattoos, a Bounce House, a magic show, and the chance to collect some 10,000 candy-filled Easter eggs and valuable prizes—including a Grand Prize of a Weekend Getaway donated by Great Wolfe Lodge. Members of ESU’s Kappa Delta Ro Fraternity and Stroudsburg High School’s National Honor Society volunteered their time to help with the day’s festivities.

## Seventh Annual Levee Loop Trail Run & Fitness Walk

The annual Levee Loop Trail Run and Fitness Walk moved from its traditional date in June this year to



coincide with National Public Lands Day on Saturday, September 29, with 60 runners. The top two men and women finishers in each of six age divisions were recognized with medal ribbons. Evan Griswold and Tom DeSchraver tied for best overall Male runners, and Carissa Root won the best overall Female award. A fun walk of the Levee Loop Trail took place prior to the race. Volunteers from the Stroudsburg Target store and Stroudsburg High School’s National Honor Society assisted with the various logistical tasks of the registration, race and awards ceremony.



## Octoberfest

Stroud Region Recreation and the EastBurg Community Alliance partnered once again to host the annual Octoberfest celebration in Miller Park. More than 400 visitors enjoyed the free day in the park with a variety of activities, music, and vendors. Guests were able to press apples into fresh cider on an old-fashioned ciderpress and ride a train to Delaware Water Gap and back. The Farmers Basket donated nearly 100 pumpkins for decorating and Heckman's Orchards contributed straw bales for scarecrow-making.



## 2012 Stroud Kids Summer Day Camp Series



the children took advantage of the numerous educational and recreational opportunities at camp.

A significant increase in the number of campers enrolled in 2012 with special needs and/or medical conditions: approximately 22 percent of the entire enrollment for the regular Stroud Kids program and 15 percent of Stroud Tots. Each camper identified with special needs were required to be accompanied by a Therapeutic Staff Support (TSS) worker or aide.

### Registration & Enrollment

Enrollment for the Stroud Kids Summer Day Camp and related programming began in early January and, when it was completed, had increased 6.25 percent over 2011 (and 130 percent over 2007), despite an increase in the fee. The base rate of \$520 for the core eight weeks comes to just \$2.66 per hour: still cheaper than babysitting and less than any other comparable camps in the area.

The Commission was awarded a Community Services Block Grant (CSBG) in the amount of \$4,490, which enabled 18 campers to attend at half the fee. These families who would otherwise be unable to send their children to camp were very appreciative and

Program/Location	Enrollment		
	2012	2011	2010
SK - Dansbury Park	162	171	165
SK - Morey Elementary	104	100	115
SK - Stroudsburg H.S.	128	131	100
ST - Stroudsburg Intermediate	73	61	-
ST - Ramsey Elementary	-	-	44
Before Camp - DP	18	27	25
Before Camp - ME/SHS	22	30	23
After Camp - DP	28	41	46
After Camp - ME/SHS	41	28	23
Basketball	-	11	16
Tennis	21	0	21
EC - Volunteens	-	-	14
EC - SK Extension	58	31	30
EC - Try-Athletics Sports Sampler	-	-	15
EC - Nature & Wildlife (Ages 4-6)	-	0	10
EC - Nature & Wildlife (Ages 6-9)	12	15	12
EC - USSI Multi-Sport Camps	46	17	-
EC - Computer Explorers	-	8	-
<b>Totals</b>	<b>713</b>	<b>671</b>	<b>659</b>



## Stroud Tots

The Stroud Tots program for ages 5-6 met for the second year at the Stroudsburg Intermediate Elementary School (SIES), with enrollment increasing by 20 percent over the previous year. The SIES Staff was very accommodating, and the location with its indoor and outdoor facilities provided a fun, safe and well-equipped environment for the campers and Staff.

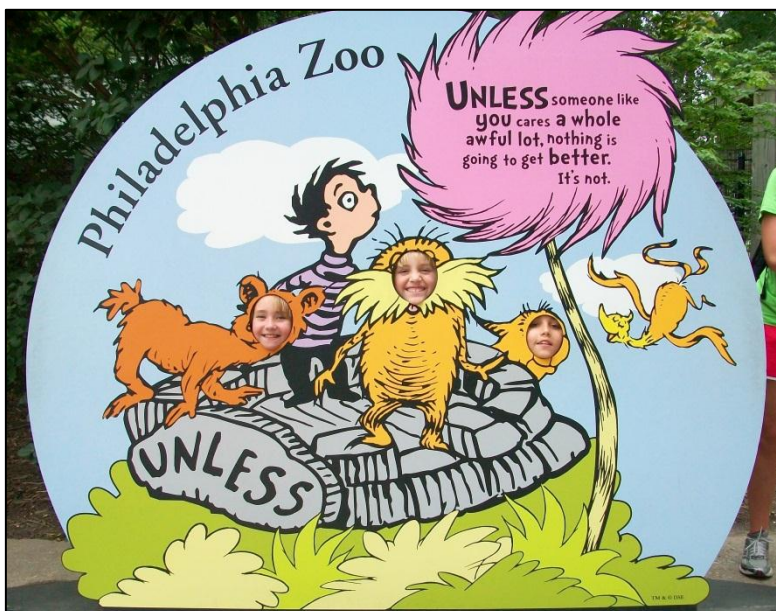
## DigiKids Safety ID

As a usual benefit of the Stroud Kids program, each camper was provided a DigiKids Safety ID, which was held by the Counselors for the duration of the camp. During the last week of camp, the photo ID card and a mini-CD of high-resolution photographs of the child, along with physical and medical information, was distributed to the parents.

## Special Events

**Karkut Entertainment** has once again generously provided his services for Stroud Kids at a large discount, offering the following popular events at each site: Family Feud, Brain Drain, Karaoke, Magic Shows, Dance Party, and Carnival Day (with air brush tattoos, a Moon Bounce, and popcorn), and Green Screen Photos. The company also compiled a CD collection of photographic memories from the entire summer that was distributed free to every camper.

**Bookmobile:** The Eastern Monroe Public Library's Bookmobile visited each site weekly, allowing campers to take advantage of its services for summer at-home recreational reading. The Staff helped to streamline the process of obtaining library cards and checking books out by the library staff.



**Philadelphia Zoo:** This year introduced an optional long distance bus trip to the Philadelphia Zoo. The fee for this trip totaled \$35 per camper, which included both bus and zoo admissions. Campers were required to bring a bagged lunch and snack with them. Before, Regular, and After Camp sessions were still held at each site for those campers who did not participate in the trip.

**Pocono Critters:** Staff from the Monroe County Conservation District visited each site with their Pocono Critters presentation. The program



featured an introduction to common wildlife in the area, with opportunities for the campers to interact with live animals and specimens of furs, quills, bones, and other wildlife artifacts.

**Roller Skating:** The annual day at Big Wheel Roller Skating Rink is a popular activity. Parents paid \$5 for the trip that includes lunch, skate rental, and a movie. Before and After Camp programs for that day were held at Brodhead Creek Park, with campers walking through the BCRA Field to commute to or from Big Wheel.

### Enrichment Camps

Extension and enrichment camps were offered in addition to the regular 8-week camp session. By sufficient parental request, an additional week of Extension Camp was added in August before the beginning of school.

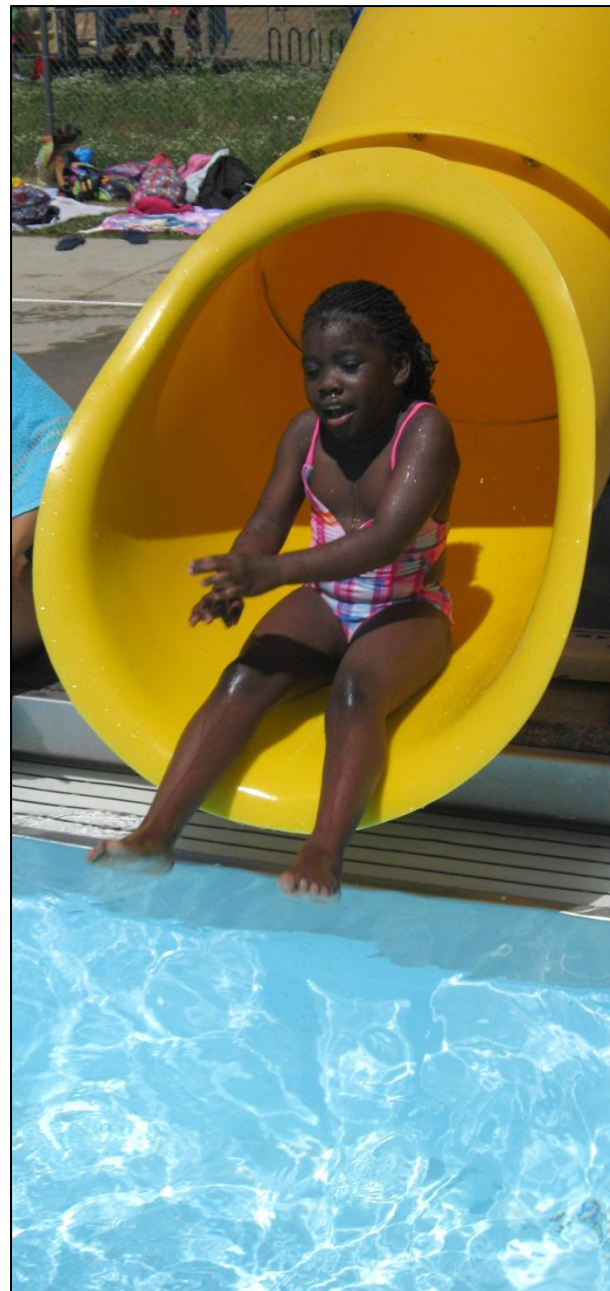
The partnership with US Sports Institute saw a 171% increase of participants compared to the previous year. The Nature and Wildlife Enrichment camp continued this year with 12 participants at Brodhead Creek Park

### Staffing

Staff Training and Orientation was held at the Community Center and on-site the Friday before the camp started. Those who also required First Aid and CPR Training received it prior to the start of the camps. Total staffing for this year included 2 Site Directors, 2 Assistant Site Directors, 51 Counselors, 3 Assistant Counselors, and 12 volunteer Counselors-in-Training.

### Revenues and Expenses

The Stroud Kids Summer Day Camp and its associated programs generated over \$247,000 of program income: a 13.4 percent increase of gross revenues over the 2011 season. The net amount helps support the overall operating budget of the Commission.



Revenues and Expenses	2012	2011	2010
total summer revenues	247,521	218,201	210,146
operational expenses	(25,228)	(21,530)	(17,043)
staffing & payroll taxes	(147,771)	(133,220)	(122,879)
payroll service	(1,100)	(1,028)	(1,392)
<b>Net</b>	<b>\$73,422</b>	<b>\$62,422</b>	<b>\$68,832</b>



## Evaluations

Evaluation forms were distributed to all parents prior to the last week of camp and a total of 118 were received back. The majority of replies were positive and common suggestions were similar to previous years to extend the hours and duration of the camp.



## Parent Comments

- *This camp helped my daughter to socialize better with other kids. My daughter has special needs and would love to return next year. Thank you for your assistance and excellent program for my daughter.*
- *George had a wonderful time at camp, every day! I wish it was longer, his counselor was great.*
- *We loved it for the second year in a row. Fun, safe, and full of great friendships and memories. Thank you all!*
- *I am extremely happy with both programs at Tots and Morey. My daughters loved it and their counselors.*
- *This is Addison's first camp experience, and I am very satisfied with the turn out. Look forward to next year.*
- *I never needed/wanted to send my daughter to day care, I am very excited that this camp is around, which gives kids with working parents a chance for a fun summer!*
- *Thank you all so much for everything you do and give these kids a great summer.*
- *Very friendly and caring staff at Stroud Tots. My son enjoyed each and every day and looked forward to attending.*
- *Stroud Kids camp has been the perfect place for Jack to spend his summer.*



# Professional Development

*With its commitment to professional development and continuing education of its Board, Staff and Associates, the Commission's collective expertise increases practical value of its essential public services to the community.*



## 2012 Regional, State & National Training

### Contributing Roles

- Monroe County Open Space Update Committee (Monroe County Citizens for Open Space)
- Brodhead Watershed Association Board of Directors
- East Stroudsburg University Recreation & Leisure Services Management Dept. Advisory Board
- Pennsylvania State Comprehensive Outdoor Recreation Plan Health & Outdoors Subcommittee
- Glen Brook Golf Club Audubon Sanctuary Program Advisory Committee
- Pennsylvania Recreation and Park Society Executive Board
- Eastern Pennsylvania Greenways & Trails Summit Planning Committee
- East Stroudsburg Borough Safety Committee
- Urban Parks Recreation Initiative, PA DCNR and PRPS

### Conferences, Workshops & Webinars

- The Case for Support fundraising webinar, National Public Lands Day
- DCNR C2P2 Grant Workshop, Luzerne County Community College
- National Park Service Park Break Course, Pocono Environmental Education Center
- 65th Annual Pennsylvania Recreation and Parks Society Conference, Champion, PA
- Pennsylvania League of Cities & Municipalities tour, training and district meeting, East Stroudsburg
- Stroud Kids and Enrichment Camp Staff Orientation and Training
- Bike Sharing Webinar, East Stroudsburg University
- DCNR Community Park Investments Make a Difference webinar
- Eastern Pennsylvania Greenways and Trails Summit, DeSales University
- Director's School, National Recreation and Park Association, Wheeling, WV
- MAP-21 Transportation Alternatives Program webinar
- American Red Cross Aquatics webcast
- All Things Walking: Data to Propel Local Walking Programs and Solutions webinar
- NRPA National Playground Safety Certification Course, State College



## Staff Certifications

- **Aquatic Fitness Instructor** (Aquatic Fitness Consultants)
- **Certified Landscape Architect** (NJ)
- **Certified Park and Recreation Executive** (National Recreation and Parks Ass'n)
- **CPR/AED for the Professional Rescuer Instructor** (American Red Cross)
- **CPR/AED and First Aid Instructor** (American Red Cross)
- **Health Fitness Specialist** (American College of Sports Medicine)
- **Healthy Steps in Motion Leader** (PA Dept. of Aging)
- **Lifeguard** (American Red Cross)
- **Lifeguard Instructor** (American Red Cross)
- **Professional Planner** (NJ)
- **Registered Landscape Architect** (PA)
- **ServeSafe Food Safety Management** (PA Dept. of Agriculture)
- **Water Safety Instructor** (American Red Cross)
- **Walk Leader Certified Instructor**

## Degrees Earned

- **Bachelor of Science**, Landscape Architecture
- **Bachelor of Science**, Leisure Sports Studies
- **Bachelor of Science**, Meteorology
- **Bachelor of Science**, Therapeutic Recreation
- **Master of Arts**, Exercise Science
- **Master of Education**, Physical Education
- **Master of Science**, Landscape Architecture

## Professional Memberships

- American Planning Association
- American Society of Landscape Architects
- American Trails Association
- National Recreation and Parks Association
- North East Sustainable Agriculture
- Pennsylvania Recreation and Park Society
- Pennsylvania Outdoor Writers Association
- Pennsylvania Alliance of Environmental Educators



*Previous page:* Beth Dwyer and Josh Leap joined the staff as Recreation professionals.

*Left:* Shelly Tharp and Mihaela Nicolescu help keep a busy office functioning smoothly.



# Friends of Stroud Region Open Space and Recreation



*Friends of Stroud Region Open Space and Recreation is a 501(c)(3) organization working to help preserve and protect open space within the Stroud Greenway system, and supporting recreational, educational, environmental, and cultural opportunities for all who live and work in the Stroud Region.*

## Stroud Greenway promotions

In September, the Friends were awarded a grant for \$16,800 from the Pocono Forest and Waters Conservation Landscape Initiative Conservation Assistance Program, matched by funds and in-kind support from the Friends, the Commission, and the Pocono Mountains Visitors Bureau, for the Stroud Region Bike/Pedestrian Network, called Bike to Nature, described in more detail on page 28.

The Friends worked on several other projects to support Greenway projects, including a Family Golf Tournament, the Third Annual Greenway Soirée, an advocacy video, a photo calendar contest, a three year capital campaign, and began planning for a Media Auction to be held in April 2013. The organization also received a raffle license, joined the Greater Pocono Chamber of Commerce as a member and staffed information booths at the Cherry Valley Festival and the Brodhead Watershed Association's River Ramble.

## Annual Membership

In 2012, the following Members contributed their tangible support to the cause and are gratefully acknowledged.

### Individual

Bradford Cooper  
Paula Gordon  
Jeffrey Hardy  
Raymond Moeller  
CJ Penwell  
Sharyn Setzer  
Tippy Sheraw  
Linda Wiles

### Student/Senior

Frank Allen

Harriet Dronska-  
Feitelberg  
Patricia Gaul  
Gaifty Lano  
Alice Larsen  
Sarah Leonard

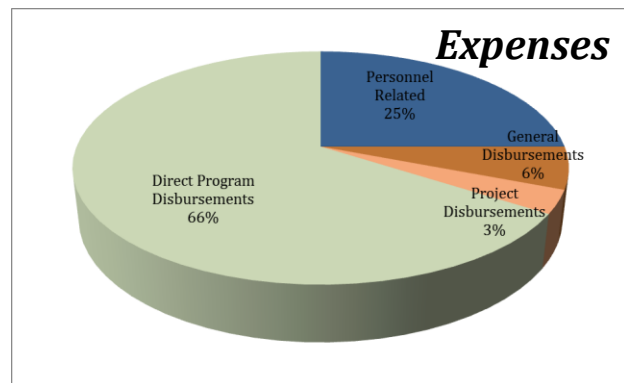
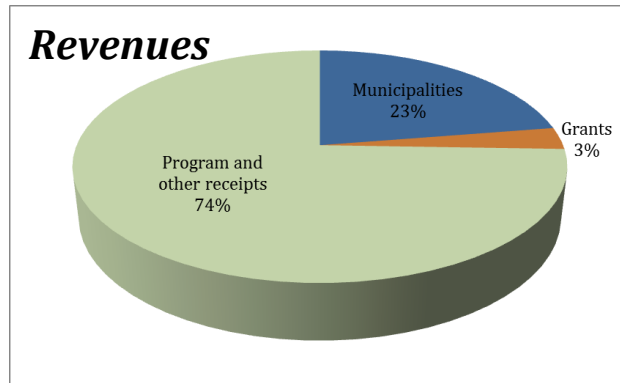
### Family

Michael Bandy  
Mary Joan Baxter  
Heather Benson  
Tiffany Boulware  
Michael Casey

Michael Corey  
Michelle Damiecki  
Paul DeFabo  
Wendy Dietrich  
Stacy Dinnen  
Jim Fitzpatrick  
William Guzman  
Christian Hall  
Michelle Hiller  
Heather Hogan  
Joe Holbert  
Karin Hornkohl  
Robin Khan

Tyesha Larkins  
Trisha Markland  
Kristine McHugh  
Lori Meyer  
Jennifer Possinger  
Kim Rosario  
Jorge Salazar  
Mark Sowers  
Bobby Unangst  
Jacki Van Gorden  
Pamela Wilson  
Sonia Wolbert  
Debby Yohey

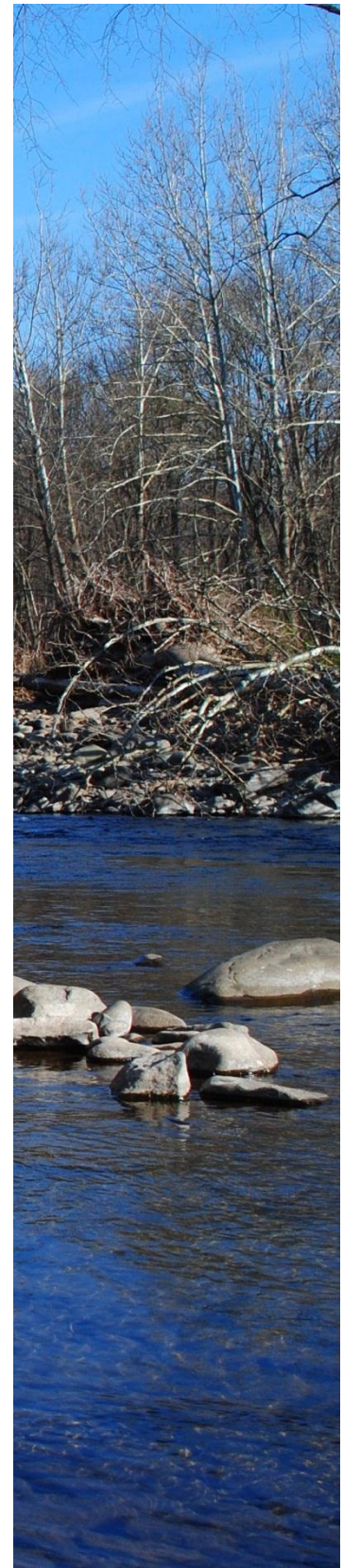
# 2012 Fiscal Operations



Receipts	2012	2011
<b>Participating Municipalities</b>		
Borough of East Stroudsburg	37,424	37,290
Borough of Stroudsburg	27,668	28,914
Stroud Township	95,489	80,307
<b>Grants</b>		
Commonwealth of Pennsylvania - DCNR	9,000	37,500
County of Monroe	4,680	5,315
Greenway Projects		
Municipal contributions - East Stroudsburg	1,882	6,571
Municipal contributions - Stroudsburg	1,392	23,452
Municipal contributions - Stroud Township	4,803	4,443
Other contributions	0	-
<b>Program and other receipts</b>		
Recreation Program	316,377	294,818
Interest Revenue	36	35
Contributions	130	518
Pool Operations	45,107	106,160
Pool Concessions	41,619	37,405
Park Stewardship	127,605	18,399
Other	1,154	621
<b>Total Receipts</b>	<b>714,366</b>	<b>681,748</b>

*In fiscal 2012, the Stroud Region Open Space and Recreation Commission received 23 percent of its operating revenues as allocations from the Member Municipalities, based on a per capita rate of \$5.22. Recreational programming generated 74 percent of the total revenues. Among disbursements, 66 percent directly supported the programming, 25 percent paid the staff and benefits, 3 percent supported greenway projects, and 6 percent covered general operating expenses.*

<b>Disbursements</b>	<b>2012</b>	<b>2011</b>
<b>Personnel Related</b>		
Professional Salary	133,612	123,879
Payroll Taxes and Benefits	47,094	43,165
<b>Personnel Subtotal</b>	<b>180,706</b>	<b>167,044</b>
<b>General Disbursements</b>		
Professional Fees	8,021	7,771
Dues & Subscriptions	0	-
Insurance	14,798	11,429
Communications	2,859	3,012
Repairs & Maintenance	466	457
Office Expense	0	-
Training and Seminars	6,214	5,778
Printing/ Advertising	9,973	5,263
Capital Purchases	0	-
<b>General Subtotal</b>	<b>42,331</b>	<b>33,710</b>
<b>Project Disbursements</b>		
Greenway Project	23,271	75,416
<b>Direct Program Disbursements</b>		
Salaries and Wages	270,175	242,023
Payroll Taxes and Benefits	47,632	37,769
Supplies	899	942
Community Center	15,054	14,314
Program Contracts	57,174	51,329
Vehicle Expenses	1,518	1,448
Miscellaneous Expense	2,519	3,485
Pool Operations	33,160	34,645
Pool Concessions	27,585	20,015
Park Stewardship	20,922	1,233
<b>Program Subtotal</b>	<b>476,638</b>	<b>407,203</b>
<b>Total disbursements</b>	<b>722,946</b>	<b>683,373</b>
<b>Net (Disbursements) / Receipts</b>	<b>(8,580)</b>	<b>(1,625)</b>
<b>Beginning Cash</b>	<b>20,253</b>	<b>21,878</b>
<b>Ending Cash</b>	<b>11,673</b>	<b>20,253</b>





# 2012-2015 Strategic Plan

*Monroe County's population is rapidly expanding in racial, ethnic, and socioeconomic diversity, and is one of the fastest growing in the state. Our collective needs and expectations are increasing the demand on our limited land, water, resources, infrastructure and other community services.*

Communities where parks, greenways, trails, and recreational services play a vital role in the lives of their residents are invigorated places to live. Such cultural facilities and healthful programming constitute essential community services of economic stimulation, environmental stewardship, and social stability.



In providing these services, the Stroud Region is more likely to experience continual regeneration of its physical, cultural, and historical aspects, which in turn leads to greater social opportunities. Such invigorated living contributes to a broad range of documented physical, mental, social, and spiritual benefits.

With public input and several joint work sessions, the Commission Board and Staff researched the issues representing the need and purpose for our mission, which form the basis for developing the action steps of a new three-year strategic plan. These issues are grouped into four areas of focus:

- Economic Stimulation
- Environmental Preservation & Stewardship
- Health and Wellness
- Social Stability

These focus areas define how well the Commission can meet the recreational and cultural needs of its residents, and contribute to responsible environmental stewardship while providing its core essential services. An analysis of the Commission's strengths, weaknesses, opportunities, and threats formed the basis for the Plan's specific, prioritized goals. The following outlines the broad objectives and goals, which have been further delineated and prioritized in the 2013 Work Plan; the full plan is posted on the website.

<b>Economic Stimulation Goals</b>	<b>Attainment Indicators</b>
1. Develop advocacy campaign targeted to businesses and other commercial enterprises to educate on the compatibility and synergy of “open space” with “economic development.”	Campaign written, adopted and implementation begun
a. Develop and adapt compelling statements to each targeted audience.	Targeted audiences identified and statements developed
b. Develop partnerships with the business community. Over 600 agent members of Pocono Mountains Association of Realtors.	Targeted businesses proposed and secured as economic partners with specific duties
c. Promote civic tourism and concept of the triple bottom line in developing asset base of green infrastructure and healthy communities. Host civic tourism workshop or seminar.	Publicity campaign developed and implemented, civic tourism workshop
d. Develop and distribute rack cards/brochures for placement at key locations of hotels, restaurants, resorts, downtown shops, etc.	Designed, printed, distributed, ongoing replacement
e. Develop 8-12 min. promotional video of Stroud Region Greenway and its economic, environmental, and social benefits.	Produced, shown in various venues each month for 12 months
f. Identify the region as the “Central Park” of the greater metropolitan area; a “Healthy Hub of the Poconos.”	Sub-theme promoted in all advocacy campaign materials
2. Develop large venue programming for civic tourism and economic impact. Capture engagement of residents as well as tourists.	Develop plans for infrastructure, funding and programming
a. Glen Park outdoor concerts, amphitheater	Implemented
b. Wilkes-Barre to Water Gap hiking/biking loop trail	In progress
3. Develop physical connections and infrastructure enhancing and linking: parks, trails, open space, and greenway facilities mapping the most popular trip originations and destinations using context-sensitive design.	Sites, facilities identified; private & public partnerships, funding secured
a. Stroud Region Bike/Ped Network	Pilot route est., in use; other linkages in dev.
b. Levee Loop Trail from Creekview Park to Mill Creek Road	Safe route and surface created
c. Other key linkages as identified in regional master plans and studies	As opportunities, funding present
d. Create, extend a connected trail system that attracts various user groups including hikers and bikers for extended visits to the region.	Identify, establish and promote trail linkages
<b>Environmental Preservation and Stewardship Goals</b>	<b>Attainment Indicators</b>
4. Explore joint Regional Environmental Advisory Committee (EAC) to help conserve and protect natural and cultural resources while promoting landscape connectivity.	Political feasibility and will determined; assist to establish if positive
5. Assist with a possible Monroe County Open Space Bond Referendum	Input into planning
a. Endorse funding for greenway/recreational facilities development along with open space acquisition through a dedicated county bond.	Resolution adopted and publicized; advocacy
6. Develop an interpretive master plan along greenway corridors and the Stroud Region Bike/Ped Network as a means to create awareness and educate citizens of the many unique natural resources contained in the Region.	Developed and implementation begun

7. Inventory both publicly and privately preserved lands and waters with respect to their geographic/ecologic systems and interpretational potential to encourage greater regional planning and intentional cooperation for landscape-scale connectivity.	Inventory completed
8. Identify the shared purposes among existing regional master site plans and project studies to integrate key goals that meet related and multiple objectives, and elevate those to a higher priority.	Report completed and used for future planning
<b>Health &amp; Wellness Goals</b>	<b>Attainment Indicators</b>
9. Develop and promote a clearinghouse or central database of regional leagues and healthful activities in the region.	Database created, publicly promoted; ongoing FB posts, media releases
10. Develop and invest in more health and wellness programming and partnerships to build a sense of community. Incorporate programming into Stroud Kids Summer Camp.	12 new H&W partnerships; Stroud Kids health and wellness programming and activities
11. Develop more connective infrastructure in the parks and greenways and promote their health and wellness benefits and public usage with appropriate signage and other publicity; develop a network of “wellness” trails.	Coordinated with Goals 3 & 6; Identification and promotion of benefits
<b>Social Stability Goals</b>	<b>Attainment Indicators</b>
12. Pursue grants for infrastructure improvements and programming for special needs, underprivileged and disadvantaged populations.	Apply for min. 3 grants/year
13. Partner with Fitzmaurice, Developmental Educational Services, Burnley, MHMR, Criminal Justice Advisory Board, Equilibrium, and other agencies to tailor and offer programming and community service projects that more closely meet the needs of their clients.	Partnerships developed and joint programming implemented
14. Develop and promote Kovarick Parklands as a natural play area for unstructured self-directed outdoor recreation.	Established, promoted and in use
15. Develop Levee Loop Trail in the “flats” area in partnership with Developmental Education Services (DES) of Monroe County, Inc. and tie in to their recently acquired property (the former Sebring's Powerhouse).	Completed and in active use

